

# VEHICLE INSPECTION REPORT

**PE63NUJ**

## Daf LF 45.150

### Inspection

Serious Damage? No

### Vehicle

VAT Plus VAT

V5 To Follow

### Details

Reg. date	28/11/2013	VIN	XLRAE45FF0L432981	Axle Combi	4x2
Year	2013	Body Style	Box Van	Rear Suspension	Steel
Mileage	927,581 Km Warranted	MOT Due	31/10/2025	Tail Lift	Cantilever
Fuel Type	Diesel	Cab Type	DAY CAB		
Colour	RED	Gearbox	MANUAL		

\*COLLECTED AS NON RUNNER, CORROSION, MOT HISTORY INCORRECTLY RECORDED IN MILES/KM\*

### Tyres

NSF	NSI1	NSI2	NSI3	NSI4
OSF	OSI1	OSI2	OSI3	OSI4
Spare	NSO1	NSO2	NSO3	NSO4
	OSO1	OSO2	OSO3	OSO4

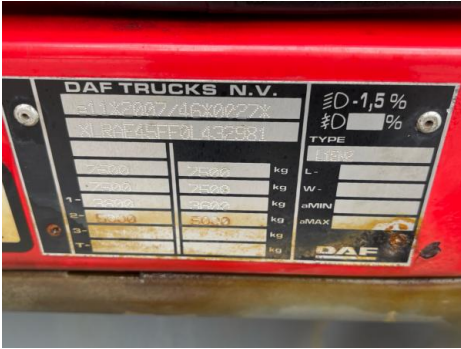
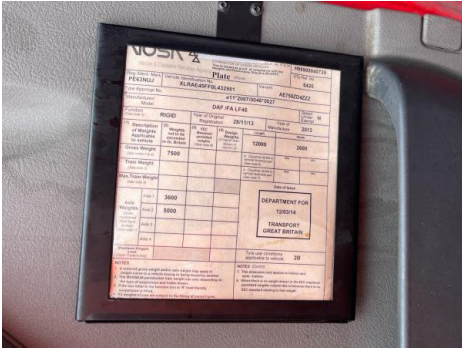
## Features

- Cruise control
- Cloth seat trim
- Radio/CD
- Front electric windows
- Central locking

## Photos



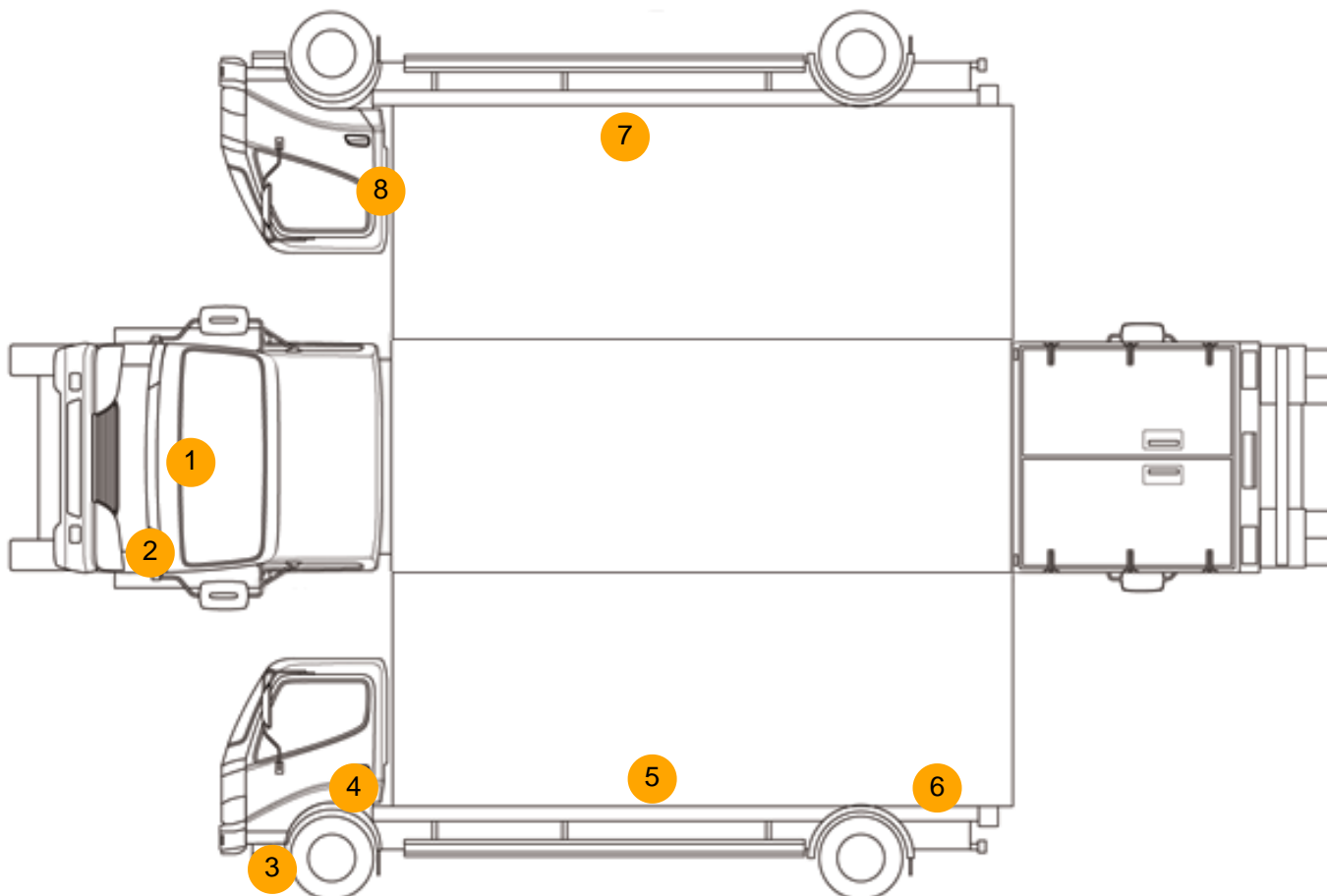




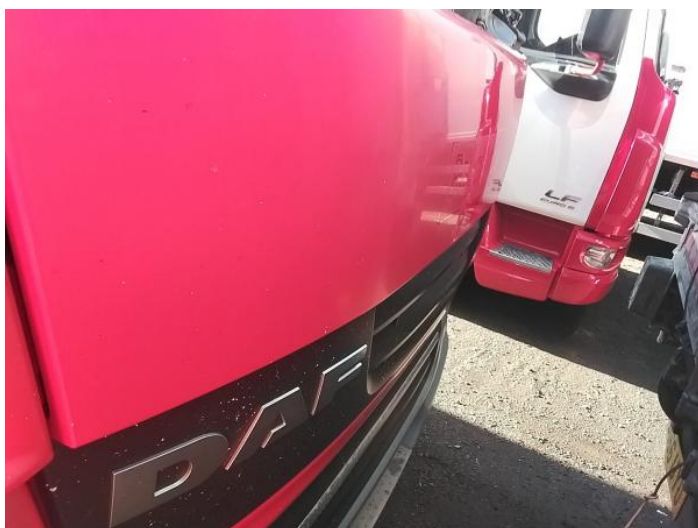




## Condition Check



## Damage Photos



1: Bonnet  
Chipped  
Multiple Chips



2: Panel Front  
Scratched  
Over 25mm Thru Paint





3: Bumper Front  
Scratched  
Over 100mm Thru Paint



4: Door nsf  
Scratched  
Over 25mm Thru Paint



5: Qtr Panel nsr  
Scratched  
Over 25mm Thru Paint



6: Qtr Panel nsr  
Cracked  
Replace



7: Qtr Panel osr  
Scratched  
Over 25mm Thru Paint



8: Door osf  
Scratched  
Over 25mm Thru Paint



9: Door Pad osf  
Soiled  
Heavy

Interior

Carpet Condition	OK	Upholstery Condition	Poor
Seat Condition	OK	Odour	-
Engine Runs	OK	No Excessive Smoking	OK
EML light illuminated	OK	DPF light illuminated	OK
ABS light illuminated	OK		