

# VEHICLE INSPECTION REPORT

**FP69HGC**

## Daf CF 260

### Inspection

Serious Damage? No

### Vehicle

VAT Plus VAT

V5 To Follow

### Details

Reg. date	20/11/2019	VIN	XLRAEM3700G280368	Cab Type	DAY CAB
Year	2019	Body Style	Curtainside	Gearbox	AUTOMATIC
Mileage	455,860 Km Warranted	CAP Clean	£9,075.00	Axle Combi	4x2
Fuel Type	DIESEL	CAP Average	£8,550.00	Rear Suspension	Steel
Colour	SILVER	CAP Below	£7,200.00	Rear Doors	Barn

\*WARNING LIGHTS ON DASH - ENGINE POWER REDUCED\* ADVANCED EMERGENCY BRAKING, LANE KEEP ASSIST

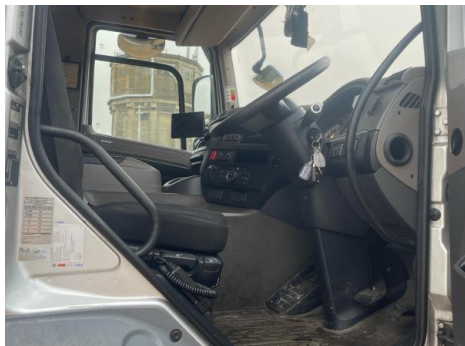
### Tyres

NSF	NSI1	NSI2	NSI3	NSI4
OSF	OSI1	OSI2	OSI3	OSI4
Spare	NSO1	NSO2	NSO3	NSO4
	OSO1	OSO2	OSO3	OSO4

## Features

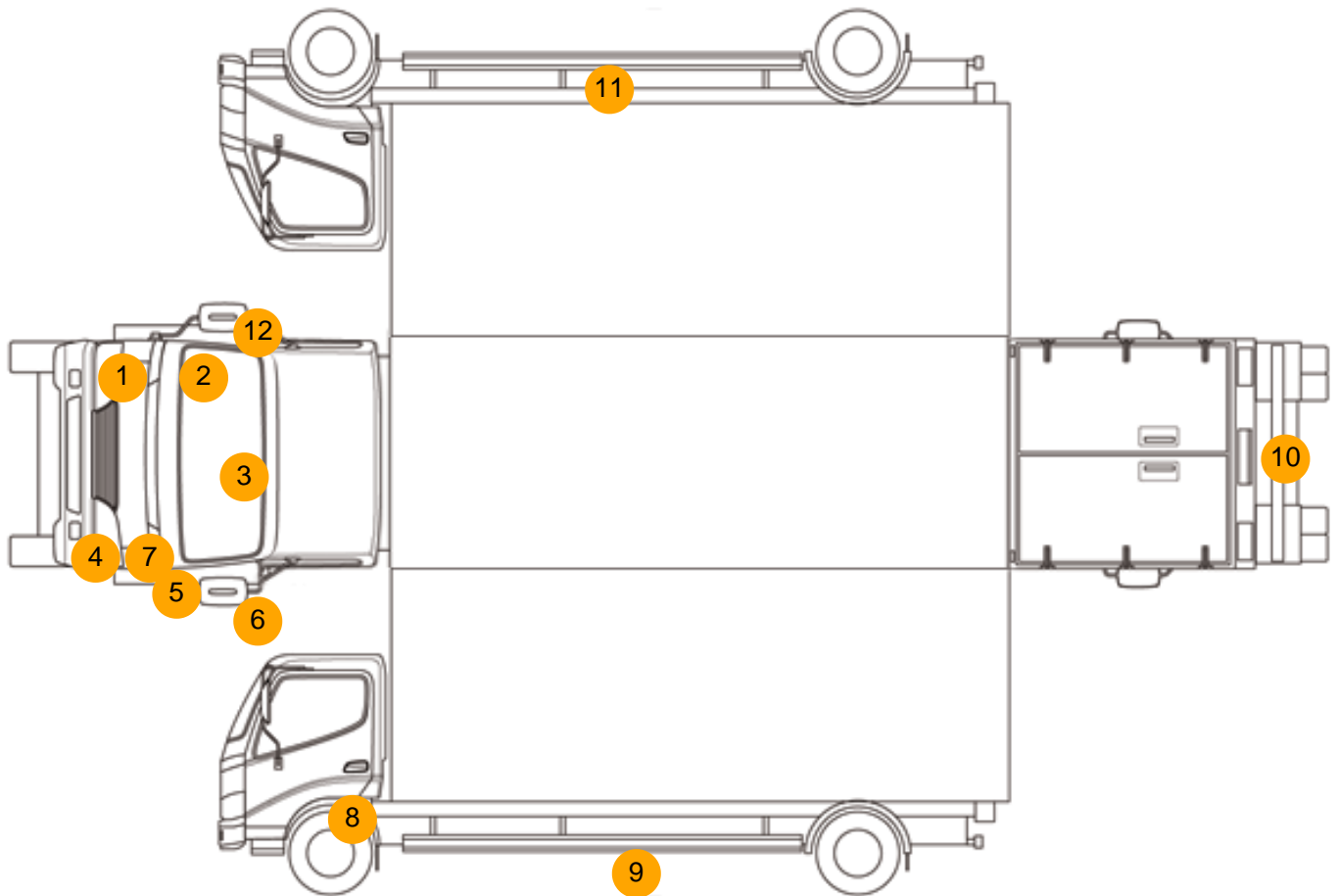
- Park assist camera
- Air conditioning

## Photos





## Condition Check



## Damage Photos



1: Bumper Front Moulding  
Missing  
Replace



2: Wing osf  
Scratched  
UpTo 25mm Thru Paint



3: Screen Front  
Chipped  
UpTo 10mm



4: Bumper Front Moulding  
Missing  
Replace



5: Wing nsf  
Scratched  
UpTo 25mm Thru Paint



6: Door Mirror Assy nsf  
Scuffed (Unpainted)  
UpTo 100mm



7: Fog Lamp Surround ns  
Scratched (Painted)  
UpTo 25mm Not Thru Paint



8: Other  
N/A  
N/A



9: Other  
N/A  
N/A



10: Bumper Rear  
Rusted  
Over 5mm



11: Other  
N/A  
N/A



12: Door Mirror Assy osf  
Scuffed (Unpainted)  
UpTo 100mm



13: Other  
N/A  
N/A

## Interior

<b>Carpet Condition</b>	OK	<b>Upholstery Condition</b>	OK
<b>Seat Condition</b>	OK	<b>Odour</b>	-
Engine Runs	OK	Gearbox 1st and Reverse Test	OK
Brakes	OK	Clutch Slip Test from Static	OK
Parking Brake	OK	Gearbox Static Gear Selection (engine running)	OK
		No Excessive Smoking	OK
EML light illuminated	Fault	Oil warning light illuminated	OK
Airbag light illuminated	OK	DPF light illuminated	Fault
ABS light illuminated	OK	Service indicator light illuminated	OK