

VEHICLE INSPECTION REPORT

LR16YCF

Vauxhall Combo 2000 1.3 CDTI 16V

Inspection

Serious Damage? No

Vehicle

VAT Plus VAT

V5 Present

Details

Reg. date 28/04/2016

Year 2016

Mileage 126,833 Miles
Warranted

Fuel Type Diesel

Colour White

VIN W0L6ZYC1AG9579133

Body Style Panel Van L1

MOT Due 29/04/2026

CAP Clean £1,050.00

CAP Average £880.00

CAP Below £650.00

Gearbox MANUAL

DONCASTER SIDE LOAD DOOR, DEADLOCKS (WITH KEYS)

Tyres

NSF

NSR

OSF

OSR

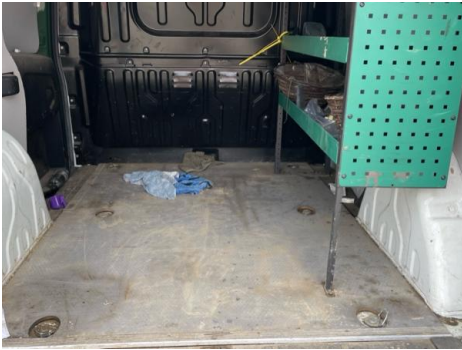
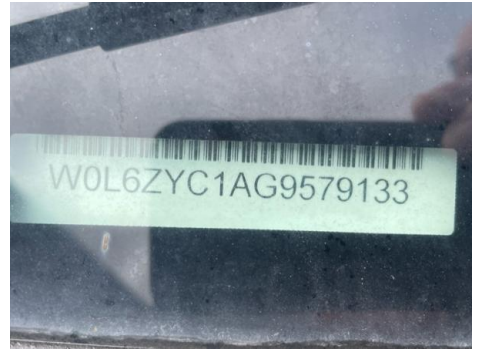
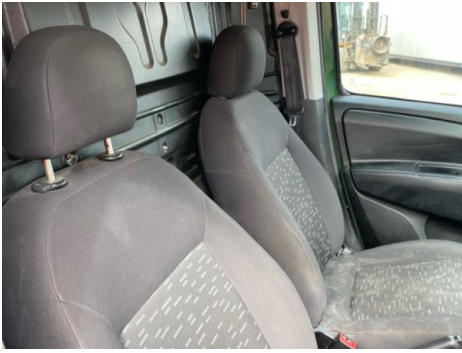
Spare

Features

- Radio/CD
- Cloth seat trim
- Front electric windows
- Drivers airbag
- Central locking

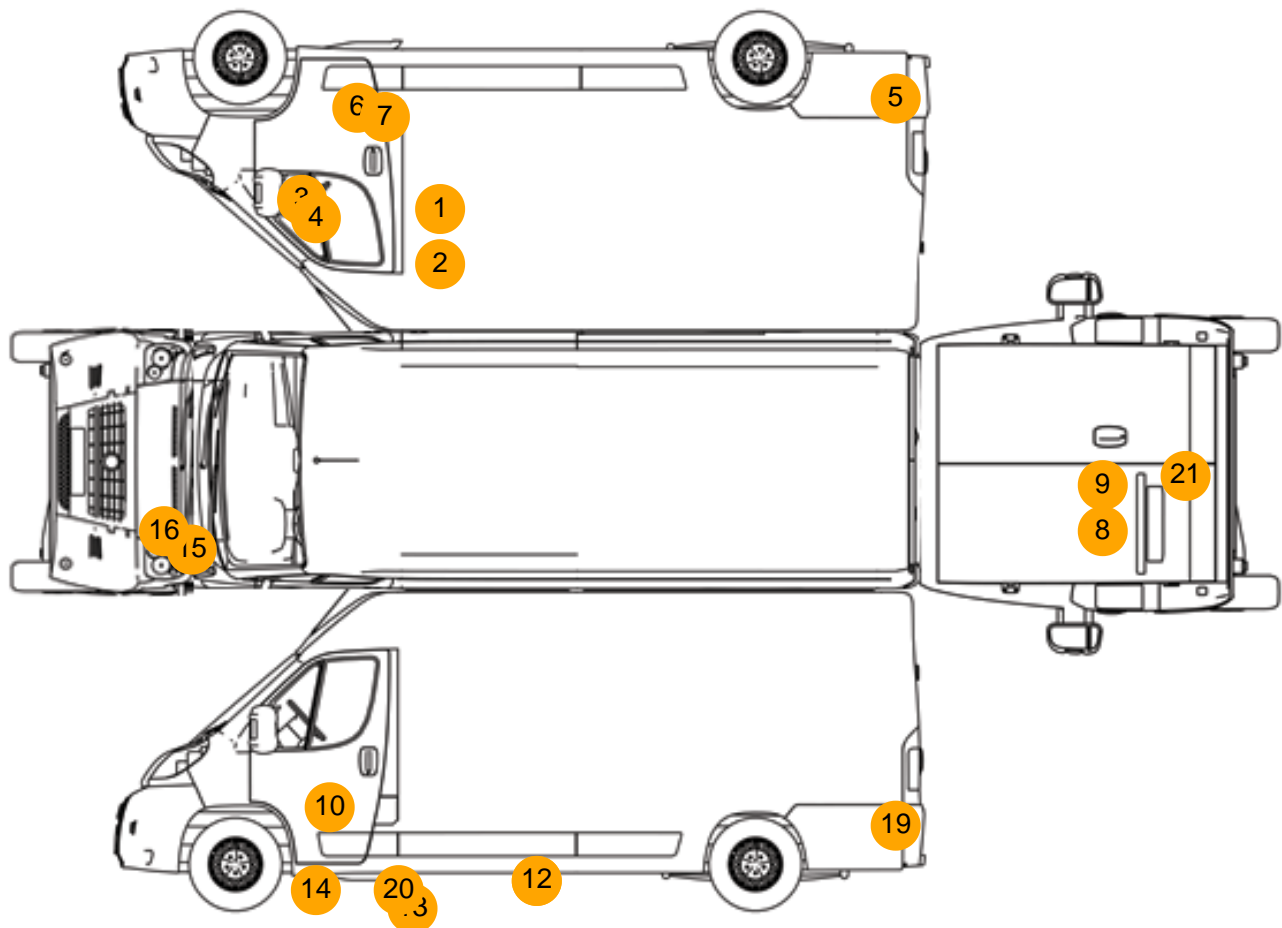
Photos







Condition Check



Damage Photos



1: Door nsf
Chipped
Multiple Chips



2: Door nsf
Scratched
Over 25mm Thru Paint



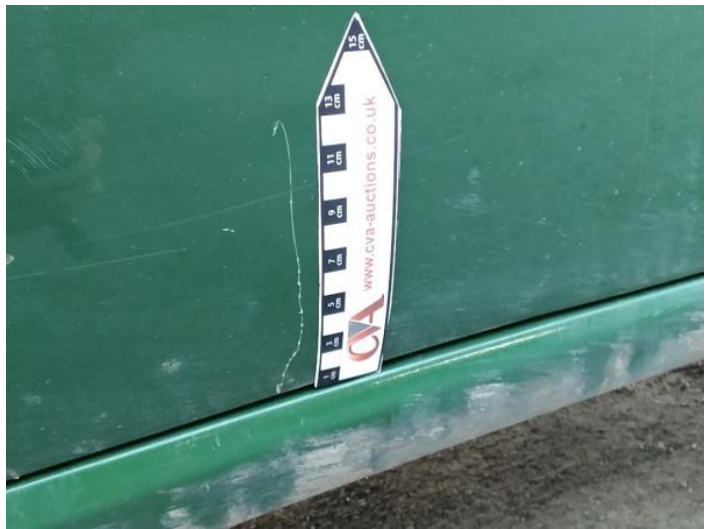
3: Door Mirror Assy nsf
Scuffed (Unpainted)
Over 100mm



4: Door Mirror Glass ns
Broken
Replace



5: Bumper Rear
Scratched
Over 25mm Not Thru Paint



6: Door nsf
Scratched
Over 25mm Thru Paint



7: Door nsf
Scratched
Over 25mm Thru Paint



8: Panel Rear
Scratched
Over 25mm Not Thru Paint



9: Panel Rear
Scratched
Over 25mm Not Thru Paint



10: Door osf
Scratched
Over 25mm Not Thru Paint



11: Sill os
Dented
With Paint Damage



12: Sill os
Dented
With Paint Damage



13: Sill os
Dented
With Paint Damage



14: Sill os
Chipped
Multiple Chips



15: Bonnet
Dented
Over 30mm



16: Bonnet
Scratched
Over 25mm Not Thru Paint



17: Seat Base Cover osf
Soiled
Light



18: Seat Base Cover nsf
Soiled
Light



19: Panel Rear
Scratched
Over 25mm Not Thru Paint



20: Sill os
Dented
With Paint Damage



21: Panel Rear
Chipped
Edge Chip

Interior

Carpet Condition	-	Upholstery Condition	Average
Seat Condition	Average	Odour	No