

VEHICLE INSPECTION REPORT

LR16YFD

Vauxhall Combo 2000 1.3 CDTI 16V

Inspection

Serious Damage? No

Vehicle

VAT Plus VAT

V5 Present

Details

Reg. date 28/04/2016

Year 2016

Mileage 111,732 Miles
Warranted

Fuel Type Diesel

Colour White

VIN W0L6ZYC1AG9579156

Body Style Panel Van L1

MOT Due 20/05/2025

CAP Clean £1,125.00

CAP Average £940.00

CAP Below £700.00

Gearbox MANUAL

SIDE LOAD DOOR, DEADLOCKS (WITH KEYS)

Tyres

NSF

NSR

OSF

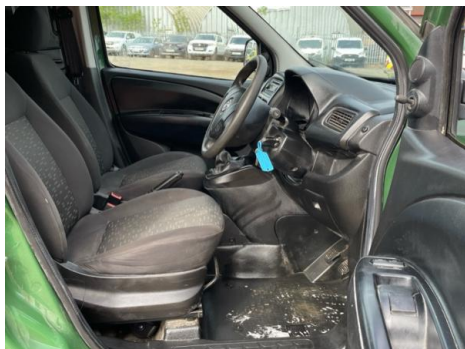
OSR

Spare

Features

- Radio/CD
- Cloth seat trim
- Front electric windows
- Drivers airbag
- Central locking

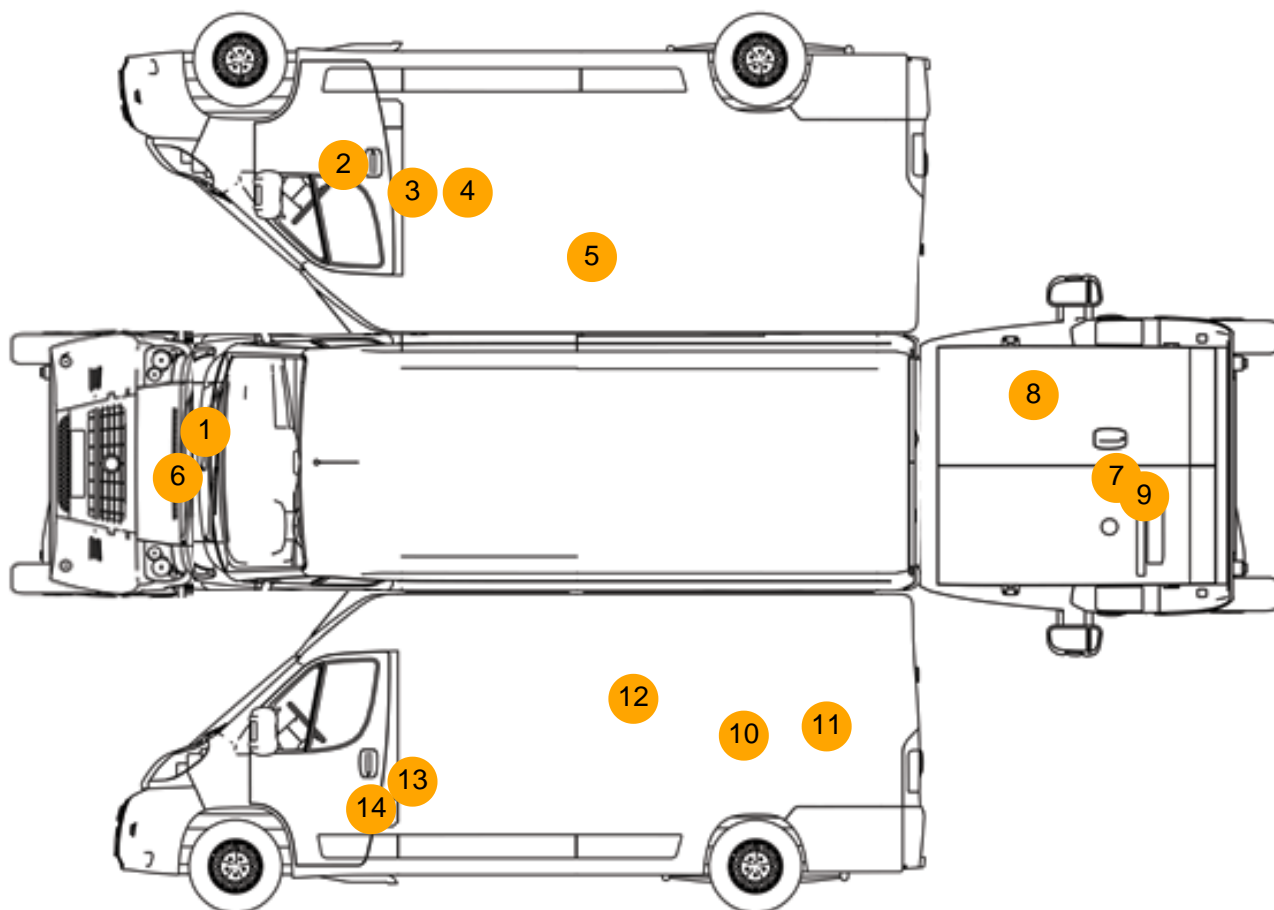
Photos







Condition Check



Damage Photos



1: Bonnet
Scratched
UpTo 25mm Not Thru Paint



2: Door nsf
Scratched
Over 25mm Not Thru Paint



3: Door nsf
Chipped
Edge Chip



4: Panel Front
Dented
With Paint Damage



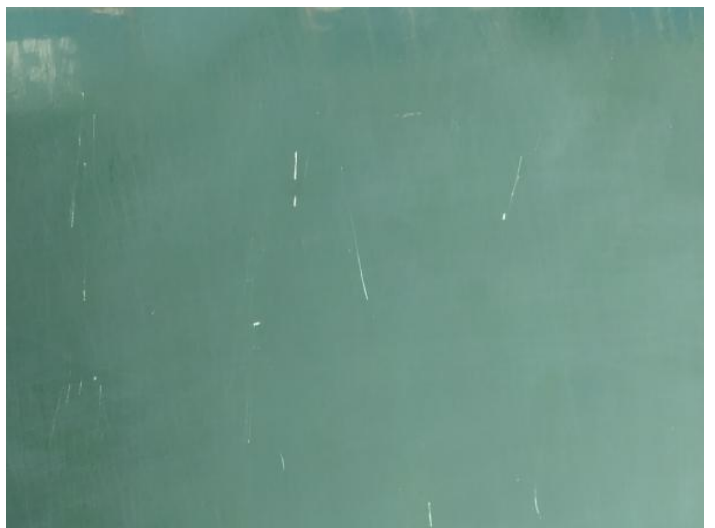
5: Panel Rear
Scratched
Over 25mm Not Thru Paint



6: Bonnet
Scratched
Over 25mm Not Thru Paint



7: Panel Rear
Dented
With Paint Damage



8: Panel Rear
Scratched
Over 25mm Not Thru Paint



9: Panel Rear
Chipped
Edge Chip



10: Panel Rear
Scratched
Over 25mm Not Thru Paint



11: Panel Rear
Scratched
UpTo 25mm Thru Paint



12: Panel Rear
Scratched
Over 25mm Not Thru Paint



13: Door osf
Chipped
Edge Chip



14: Door osf
Dented
With Paint Damage

Interior

Carpet Condition
Seat Condition

Average
Average

Upholstery Condition
Odour

Average
No