

VEHICLE INSPECTION REPORT

LR16YFO

Vauxhall Combo 2000 1.3 CDTI 16V

Inspection

Serious Damage? No

Vehicle

VAT Plus VAT

V5 Present

Details

Reg. date 31/03/2016

Year 2016

Mileage 132,144 Miles Not Warranted

Fuel Type Diesel

Colour White

VIN W0L6ZYC1AG9577742

Body Style Panel Van L1

MOT Due 18/01/2026

CAP Clean £1,025.00

CAP Average £850.00

CAP Below £630.00

Gearbox MANUAL

DONCASTER SIDE LOAD DOOR, E/ WINDOWS, DEADLOCKS (WITH KEYS)

Tyres

NSF

NSR

OSF

OSR

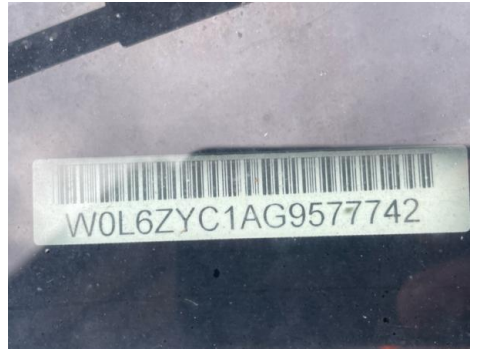
Spare

Features

- Radio/CD
- Cloth seat trim
- Front electric windows
- Drivers airbag
- Central locking

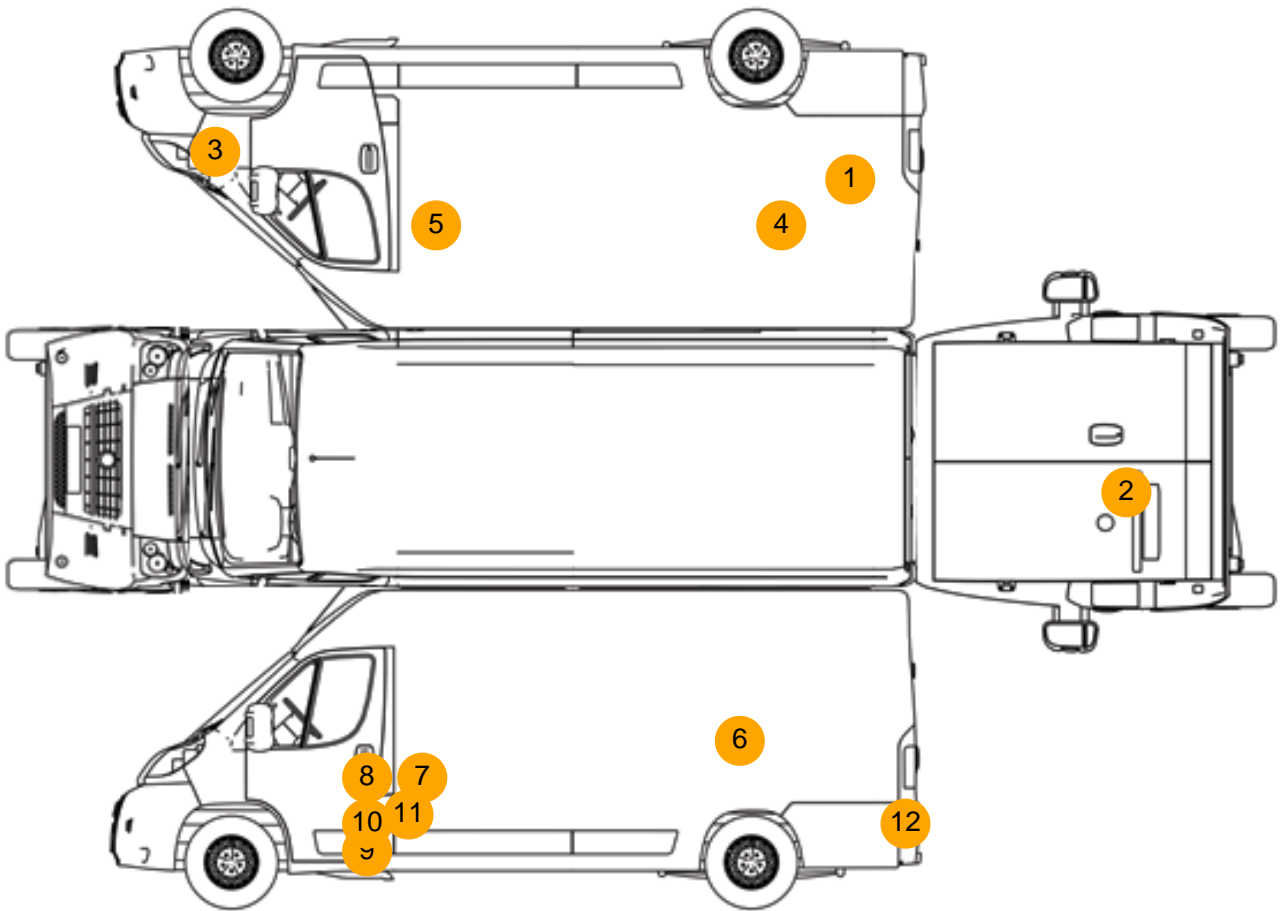
Photos







Condition Check



Damage Photos



1: Panel Rear
Scratched
Over 25mm Not Thru Paint



2: Panel Rear
Chipped
Edge Chip



3: Moulding nsf Wing
Scratched (Painted)
Over 25mm Not Thru Paint



4: Panel Rear
Scratched
Over 25mm Not Thru Paint



5: Panel Front
Scratched
Over 25mm Not Thru Paint



6: Panel Rear
Chipped
Edge Chip



7: Door osf
Chipped
Edge Chip



8: Door osf
Scratched
Over 25mm Not Thru Paint



9: Door osf
Scratched
UpTo 25mm Thru Paint



10: Door osf
Dented
Between 10mm + 30mm



11: Door osf
Chipped
Over 5mm



12: Screen Front
Cracked
Replace

Interior

Carpet Condition	Average
Seat Condition	Average

Upholstery Condition	Average
Odour	No