

VEHICLE INSPECTION REPORT

PN67ORO

Daf CF 330

Inspection

Serious Damage? No

Vehicle

VAT Plus VAT

V5 Present

Details

Reg. date	04/10/2017	Colour	WHITE/GREEN	Cab Type	DAY CAB
Year	2017	VIN	XLRASM4100G152258	Axle Combi	6x2
Mileage	339,337 Km Warranted	Body Style	Flatbed & Crane	Steering Combi	Rear-Lift Steer
Fuel Type	Diesel	MOT Due	30/11/2025	Rear Suspension	Steel

DAY CAB, A/C, PALFINGER PK 18002 EH CRANE (YEAR 2017), REAR CAMERA, SURROUND CAMERA SYSTEM

Tyres

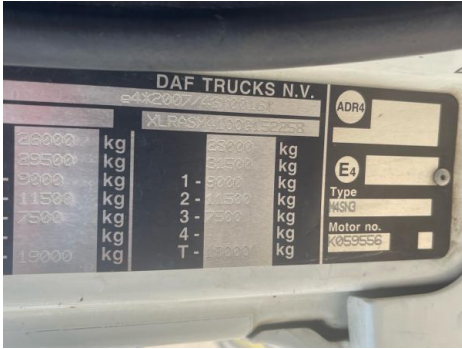
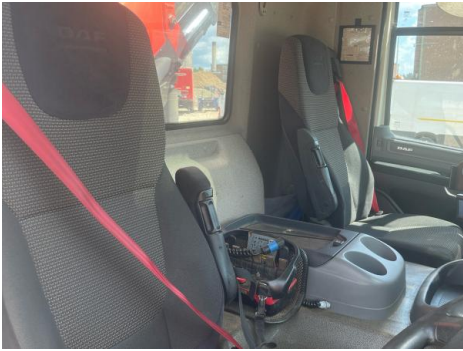
NSF	NSI1	NSI2	NSI3	NSI4
OSF	OSI1	OSI2	OSI3	OSI4
Spare	NSO1	NSO2	NSO3	NSO4
	OSO1	OSO2	OSO3	OSO4

Features

- Air conditioning

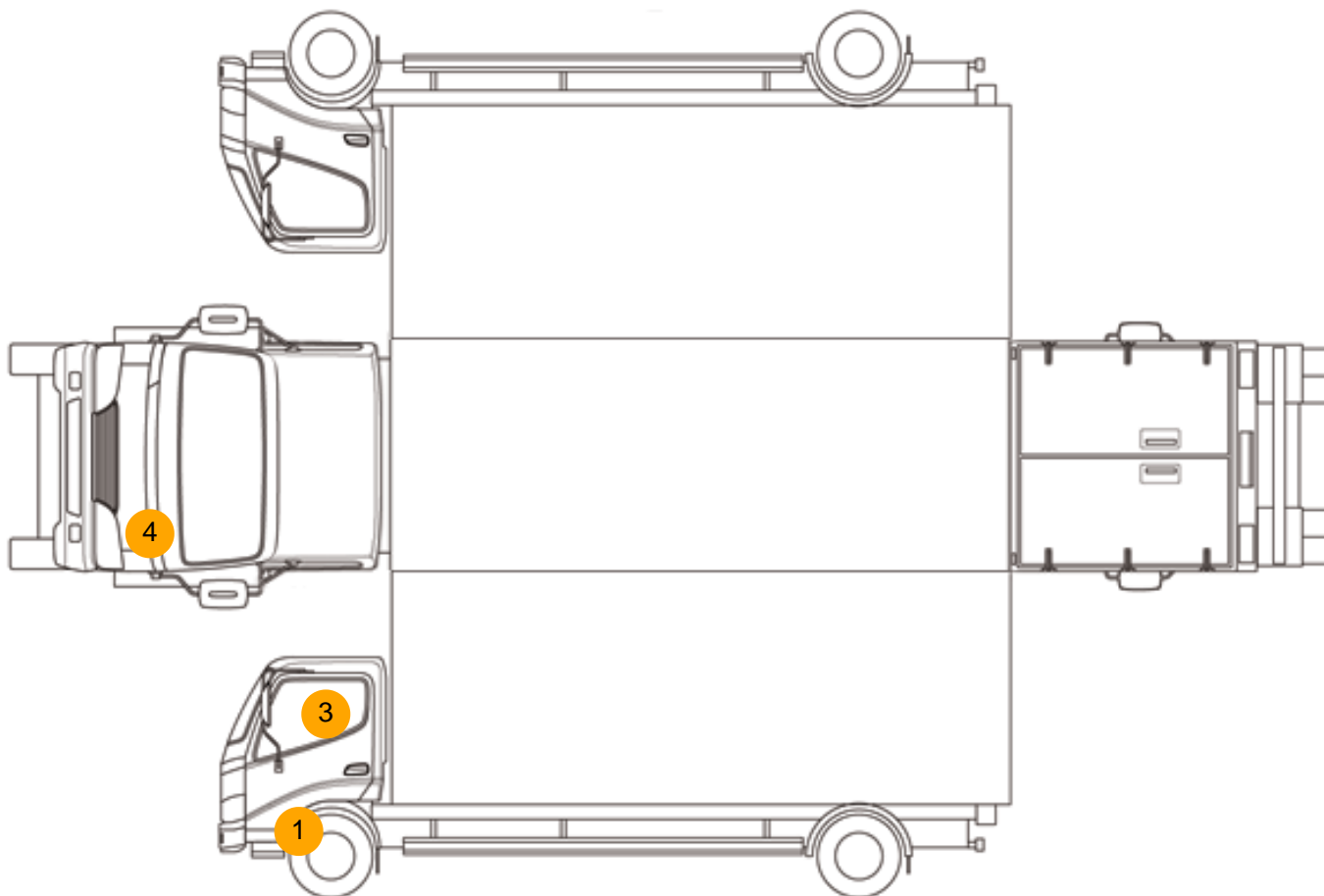
Photos







Condition Check



Damage Photos



1: Screen Front
Chipped
UpTo 10mm



2: Wing nsf
Scratched
Over 25mm Thru Paint



3: Door Mirror Assy nsf
Broken
Replace



4: Wing osf
Cracked
Replace

Interior

Carpet Condition -
Seat Condition -

Upholstery Condition -
Odour -