

# VEHICLE INSPECTION REPORT

**LN64CFX**

## Mercedes-Benz Econic 2630

Inspection		Vehicle	
Serious Damage?	No	VAT	Plus VAT
		V5	Present

Details					
Reg. date	30/12/2014	Colour	WHITE	Cab Type	CREW CAB
Year	2014	VIN	WDB9560632V237955	Gearbox	AUTOMATIC
Mileage	Not Showing	Body Style	Refuse Collector	Axle Combi	6x2
Fuel Type	Diesel	MOT Due	31/10/2025		

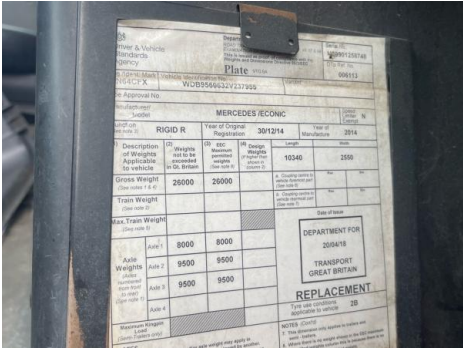
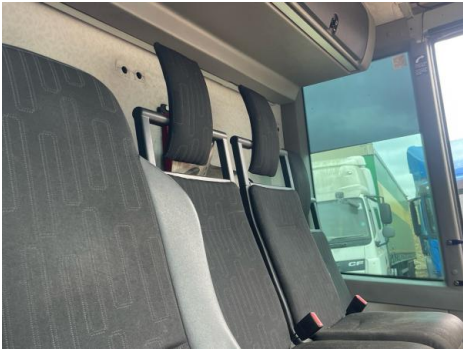
\*PARTIALLY STRIPPED, ONLY DRIVES IN FIRST GEAR & REVERSE, WARNING LIGHTS ON DASH\* FAUN VARIOPRESS BODY, ZOELLER SINGLE LIFT, LAST KNOWN MOT MILEAGE 268,150KM 15/10/2024

Tyres				
NSF	NSI1	NSI2	NSI3	NSI4
OSF	OSI1	OSI2	OSI3	OSI4
Spare	NSO1	NSO2	NSO3	NSO4
	OSO1	OSO2	OSO3	OSO4

## Photos

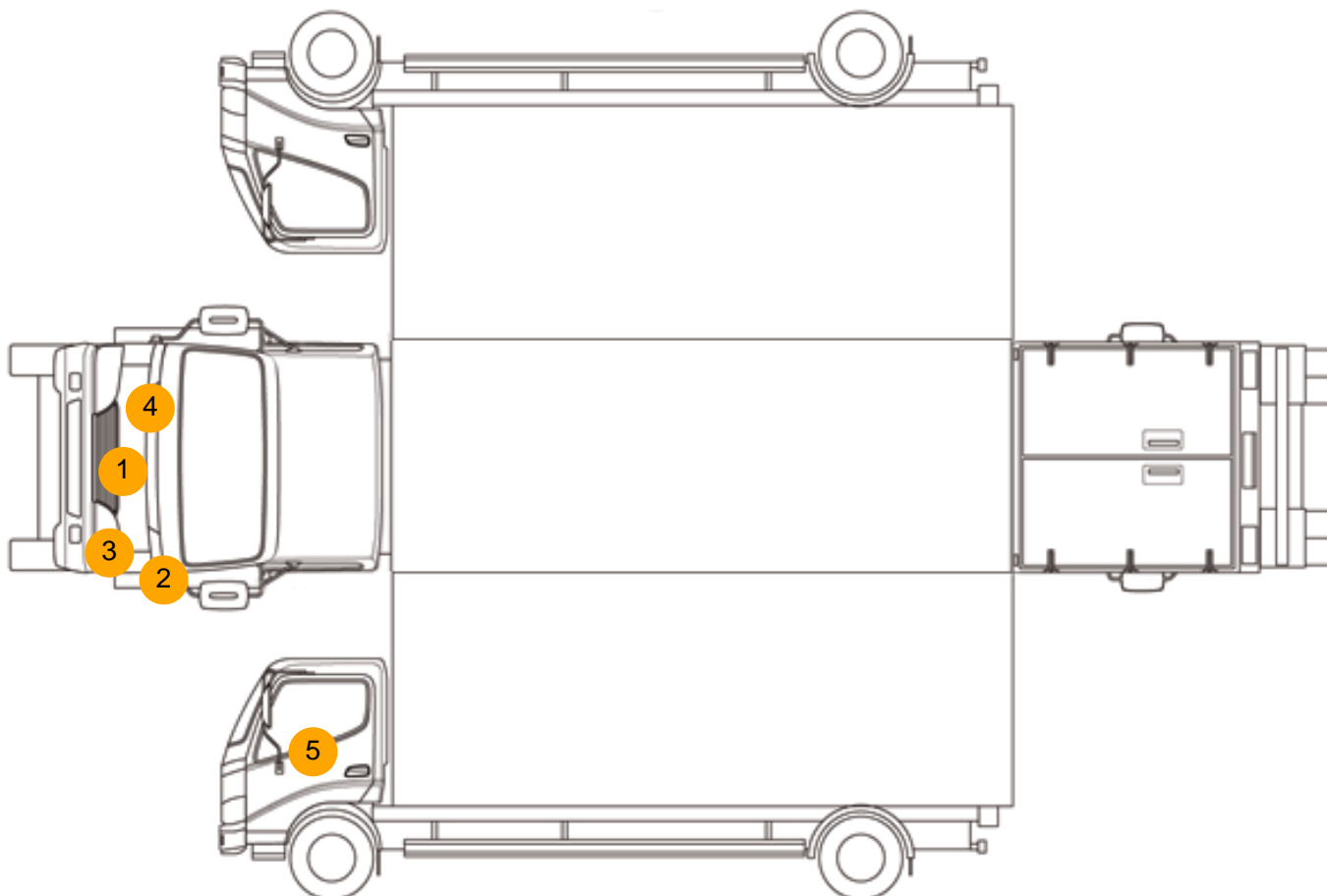








## Condition Check



## Damage Photos



1: Bumper Front Grill  
Missing  
Replace



2: Bumper Front  
Cracked  
Over 25mm



3: Headlamp ns  
Broken  
Replace



4: Headlamp os  
Missing  
Replace



5: Door Mirror Assy osf  
Broken  
Replace



6: In Car Entertainment  
Missing  
Replace



7: Steering Wheel  
Damaged  
Replace

## Interior

<b>Carpet Condition</b>	<b>Average</b>	<b>Upholstery Condition</b>	<b>Poor</b>
<b>Seat Condition</b>	<b>Average</b>	<b>Odour</b>	<b>-</b>
Engine Runs	OK	Gearbox 1st and Reverse Test	OK
Brakes	OK	Clutch Slip Test from Static	OK
Turbo Boosting	OK	Gearbox Static Gear Selection (engine running)	Fault
Parking Brake	OK	No Excessive Smoking	OK
EML light illuminated	Fault	Oil warning light illuminated	OK
Airbag light illuminated	OK	DPF light illuminated	OK
ABS light illuminated	OK	Service indicator light illuminated	OK