

VEHICLE INSPECTION REPORT

PE63NKT

Daf LF 45.140

Inspection

Serious Damage? No

Vehicle

VAT Plus VAT

V5 Present

Details

Reg. date 25/11/2013

VIN XLRAE45FF0L432779

Gears 5

Year 2013

Body Style Box Van

Doors 2

Mileage 725,721 Miles
Warranted

Keys 1

Axle Combi 4x2

Fuel Type Diesel

Cab Type DAY CAB

Colour RED

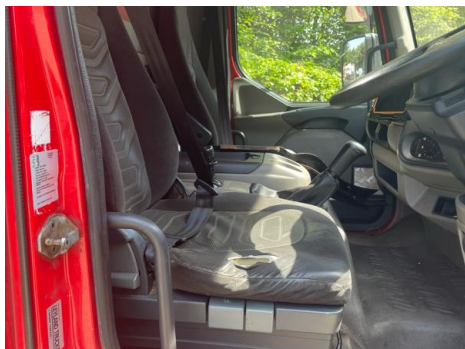
Gearbox Manual

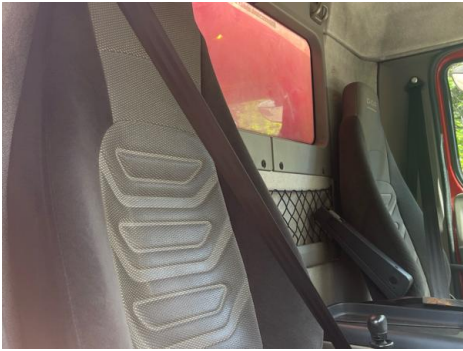
COLLECTED AS NON-RUNNER - CORROSION DAY CAB, CANTILEVER TAIL LIFT/REAR DOOR
WARNING LIGHTS ON DASH

Tyres

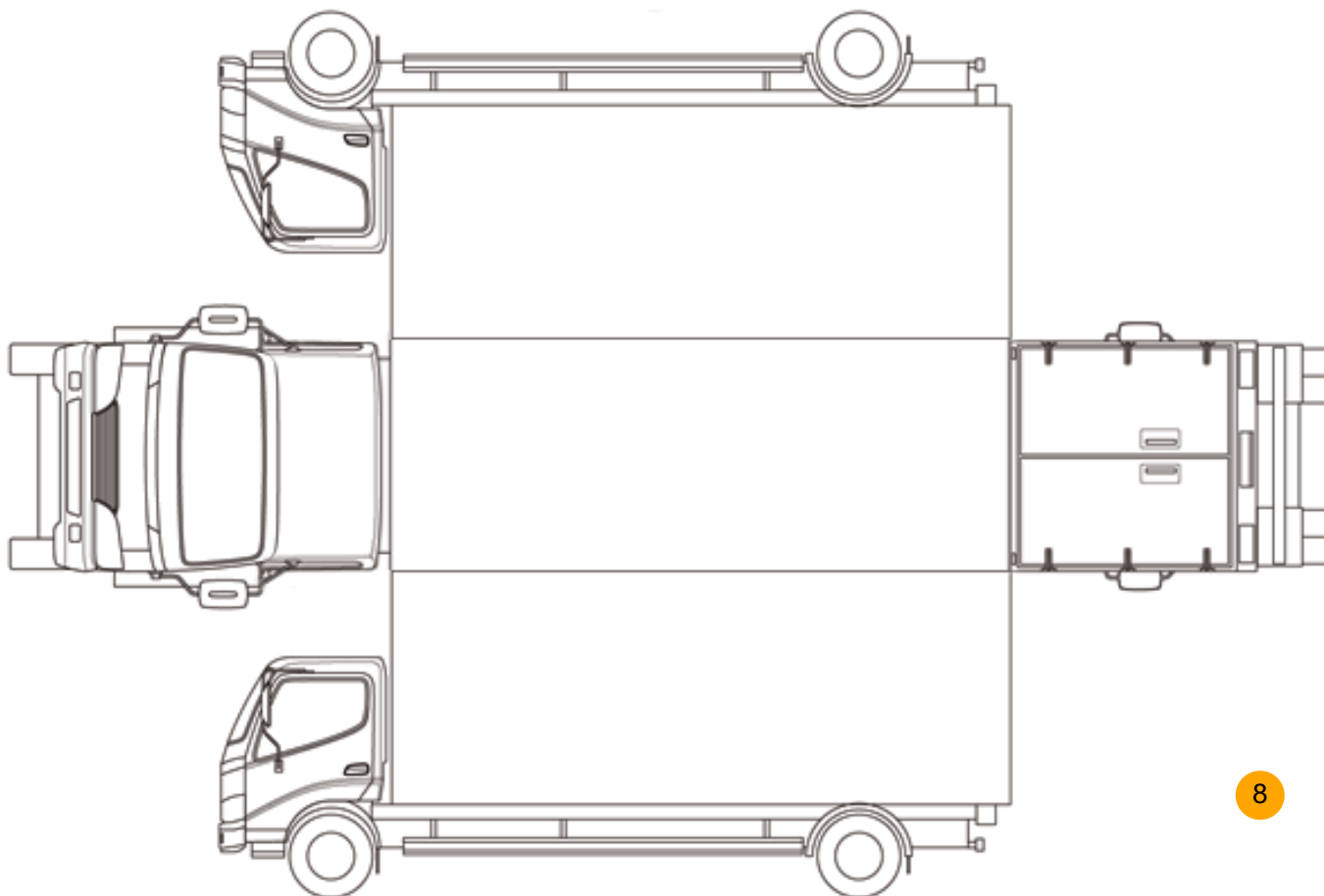
NSF	NSI1	NSI2	NSI3	NSI4
OSF	OSI1	OSI2	OSI3	OSI4
Spare	NSO1	NSO2	NSO3	NSO4
	OSO1	OSO2	OSO3	OSO4

Photos





Condition Check



8

Damage Photos



1: Seat Base Cover osf
Torn
Over 3mm



2: Carpets Front
Torn
Over 10mm



3: Sill os
Rusted
Over 5mm



4: Door Moulding osf
Scuffed (Unpainted)
Over 100mm



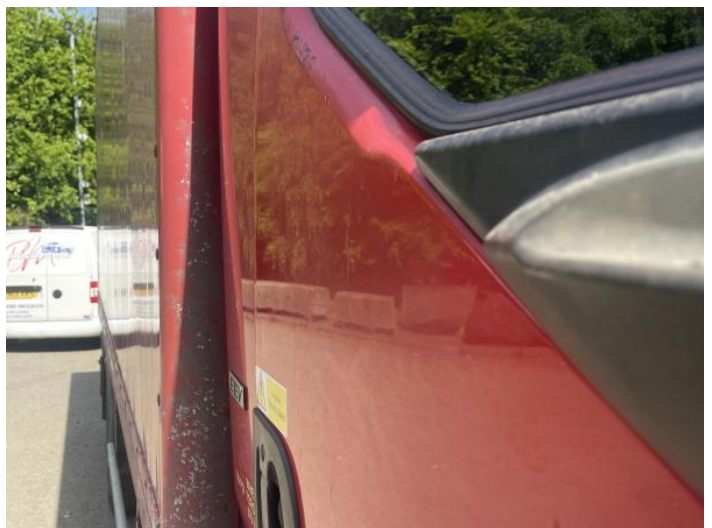
5: Bonnet
Chipped
Multiple Chips



6: Bumper Front
Rusted
Over 5mm



7: Wing osf
Scratched
Over 25mm Thru Paint



8: Door osf
Dented
Over 30mm



9: Qtr Panel osr
Rusted
Over 5mm

10: Tailgate
Rusted
Over 5mm



11: Qtr Panel nsr
Rusted
Over 5mm

12: Door Moulding nsf
Scuffed (Unpainted)
Over 100mm

Interior

Carpet Condition
Seat Condition

Poor
Poor

Upholstery Condition
Odour

Poor
-

EML light illuminated	OK	Oil warning light illuminated	OK
Airbag light illuminated	OK	DPF light illuminated	OK
ABS light illuminated	OK	Service indicator light illuminated	OK