

VEHICLE INSPECTION REPORT

BT68LVW

Iveco EUROCARGO 120-210

Inspection

Serious Damage? No

Vehicle

VAT Plus VAT

V5 To Follow

Details

Reg. date 04/01/2019

VIN ZCFAG1EF102687411

Cab Type CREW CAB

Year 2019

Body Style Curtainside

Gearbox AUTOMATIC

Mileage 260,397 Km Warranted

Service history Yes

Axle Combi 4x2

Fuel Type Diesel

Service documents Printout

Rear Suspension Air

Colour WHITE

MOT Due 31/03/2026

TAIL LIFT DOES NOT CLOSE WEIGH SYSTEM

Tyres

NSF NSI1

NSI2

NSI3

NSI4

OSF OSI1

OSI2

OSI3

OSI4

Spare NSO1

NSO2

NSO3

NSO4

OSO1

OSO2

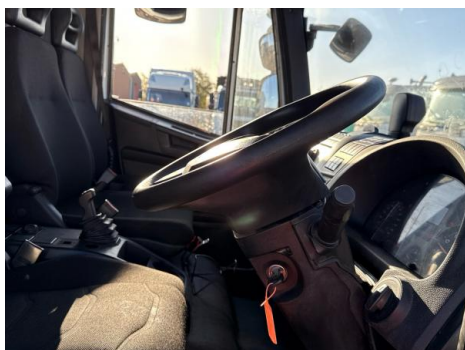
OSO3

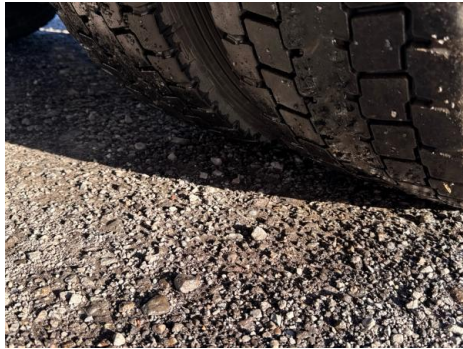
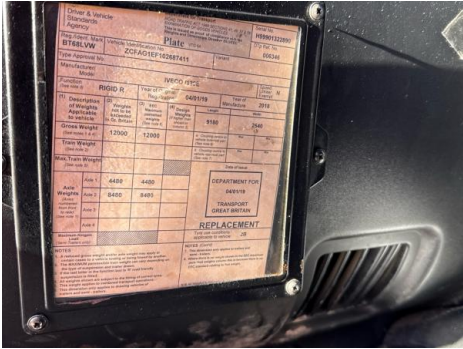
OSO4

Features

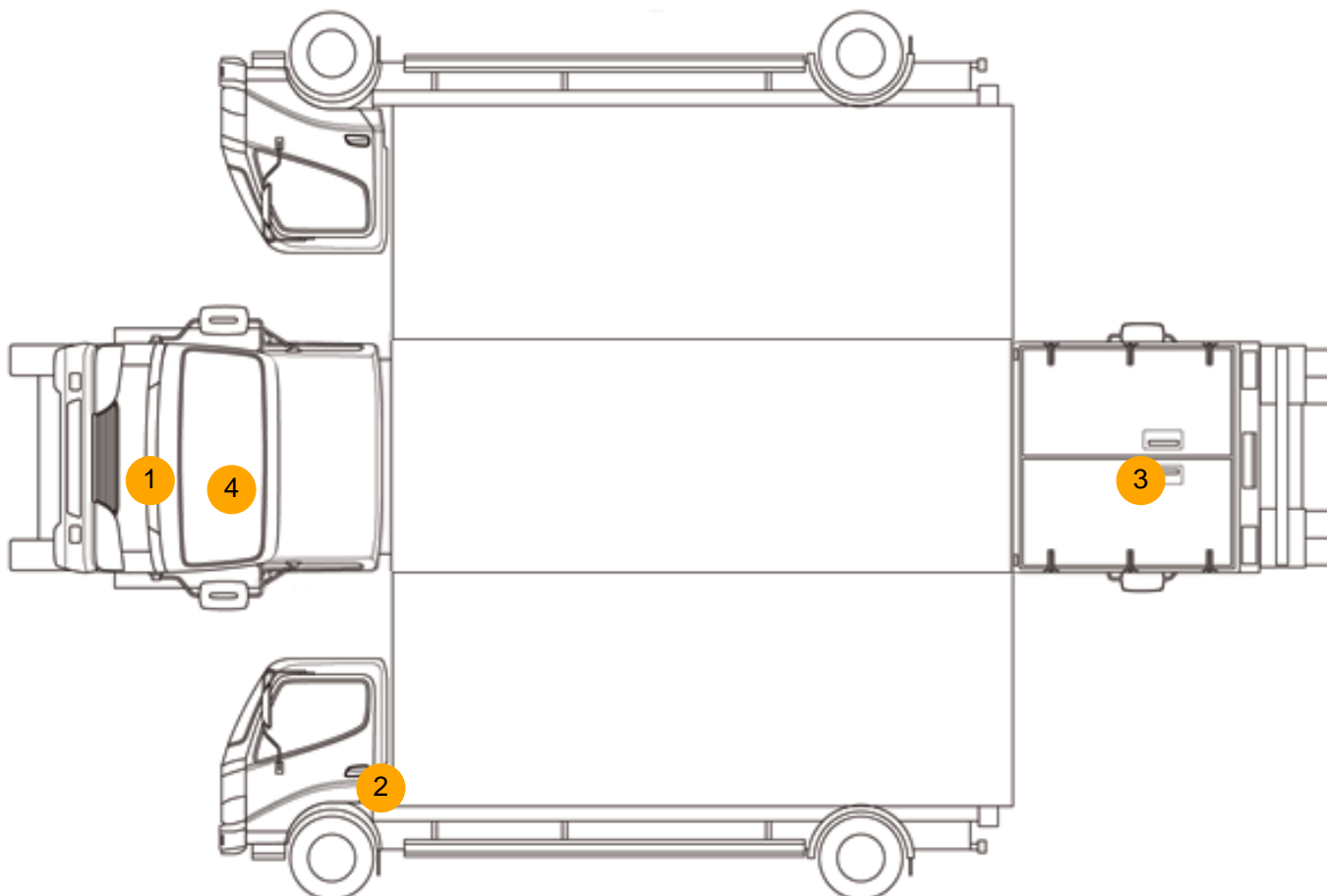
- Bluetooth connection
- Air conditioning
- Cloth seat trim
- Cruise control
- Front electric windows
- Park assist camera
- Drivers airbag
- Digital radio
- Central locking

Photos





Condition Check



Damage Photos



1: Bonnet
Chipped
Multiple Chips



2: Door nsf
Dented
With Paint Damage



3: Other
N/A
N/A



4: Screen Front
Chipped
Over 10mm

Interior

Carpet Condition	OK	Upholstery Condition	OK
Seat Condition	OK	Odour	-
Engine Runs	OK	No Excessive Smoking	OK
EML light illuminated	OK	DPF light illuminated	OK
ABS light illuminated	OK		