

VEHICLE INSPECTION REPORT

WX17KFP

Isuzu D-Max 2.5 TD

Inspection

Serious Damage? No

Vehicle

VAT Plus VAT
V5 Buyer To Apply

Details

Reg. date	20/05/2017	VIN	MPATFS86JFT031372	CAP Below	£4,250.00
Year	2017	Body Style	Pickup Single Cab	Cab Type	CREW CAB
Mileage	81,950 Miles Warranted	MOT Due	31/03/2026	Gearbox	MANUAL
Fuel Type	Diesel	CAP Clean	£6,600.00	Gears	6
Colour	WHITE	CAP Average	£5,600.00	Axle Combi	4x4

WINCH, TOW BAR, ROOF RACK, POWER INVERTER

Tyres

NSF

NSR

OSF

OSR

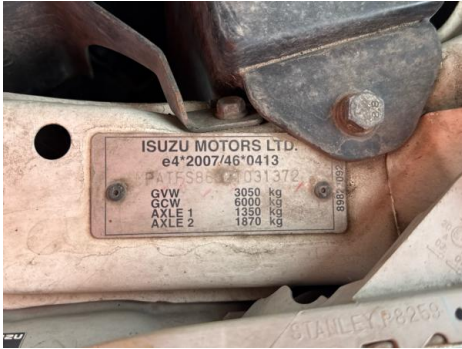
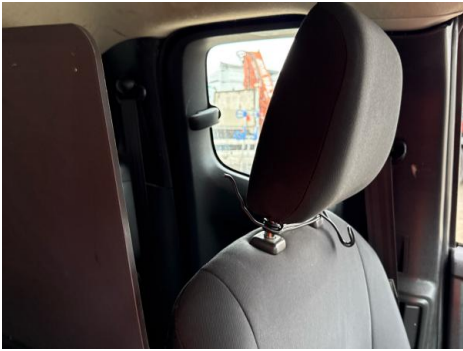
Spare

Features

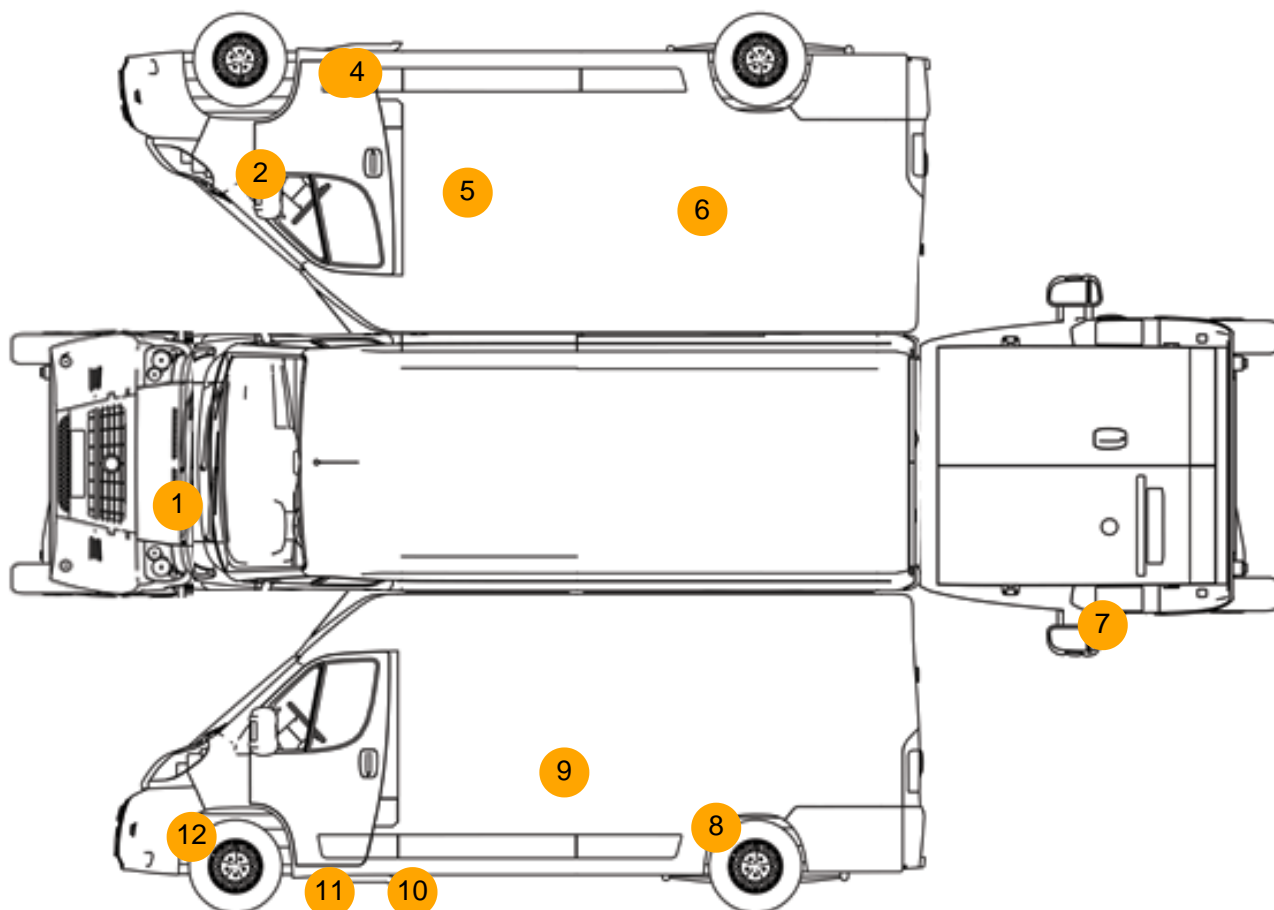
- Park assist camera
- Digital radio
- Air conditioning
- Front electric windows
- Drivers airbag
- Passenger airbag
- Central locking
- Cloth seat trim

Photos





Condition Check



Damage Photos



1: Bonnet
Chipped
Multiple Chips



2: Wing of
Scratched
Over 25mm Thru Paint



3: Sill os
Dented
Over 30mm



4: Sill os
Dented
With Paint Damage



5: Qtr Panel osr
Scratched
Over 25mm Thru Paint



6: Qtr Panel osr
Scratched
Over 25mm Thru Paint



7: Panel Rear
Chipped
Multiple Chips



8: Qtr Panel nsr
Scratched
Over 25mm Thru Paint



9: Qtr Panel nsr
Chipped
Multiple Chips



10: Sill ns
Dented
Over 30mm



11: Sill ns
Dented
Over 30mm



12: Bumper Front
Scratched
Over 100mm Thru Paint



13: Door Pad osf
Broken
Replace



14: Fascia Panel
Broken
Replace



15: Fascia Panel
Holed
Over 3mm

Interior

Carpet Condition	OK	Upholstery Condition	Poor
Seat Condition	OK	Odour	No
Engine Runs	OK	No Excessive Smoking	OK
EML light illuminated	OK	DPF light illuminated	OK
ABS light illuminated	OK		