

VEHICLE INSPECTION REPORT

KU61ECC

Volvo FMX 380

Inspection

Serious Damage? No

Vehicle

VAT Plus VAT

V5 Buyer To Apply

Details

Reg. date 02/09/2011

Year 2011

Mileage 572,785 Km Not Warranted

Fuel Type Diesel

Colour WHITE/BLUE

VIN YV2JG00G0BA716235

Body Style Hookloader

MOT Due 30/04/2026

Cab Type DAY CAB

Gearbox AUTOMATIC

Axle Combi 8x4

Rear Suspension Steel

MOT MILEAGE HISTORY POSSIBLE IN KM/MILES INCORRECTLY SHEETING SYSTEM

Tyres

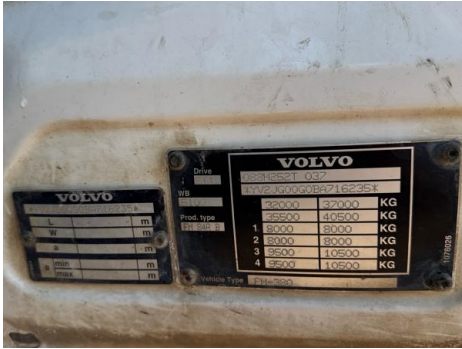
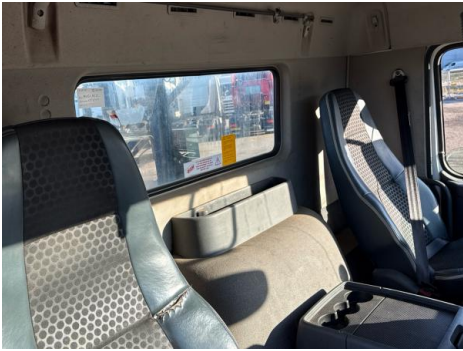
NSF	NSI1	NSI2	NSI3	NSI4
OSF	OSI1	OSI2	OSI3	OSI4
Spare	NSO1	NSO2	NSO3	NSO4
	OSO1	OSO2	OSO3	OSO4

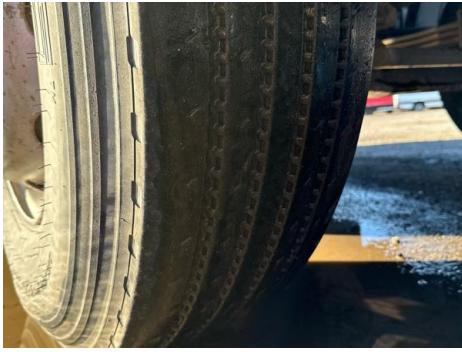
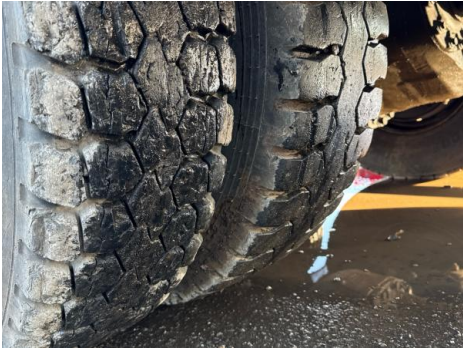
Features

- Bluetooth connection
- Cruise control
- Digital radio
- Air conditioning
- Front electric windows
- Drivers airbag
- Central locking
- Cloth seat trim

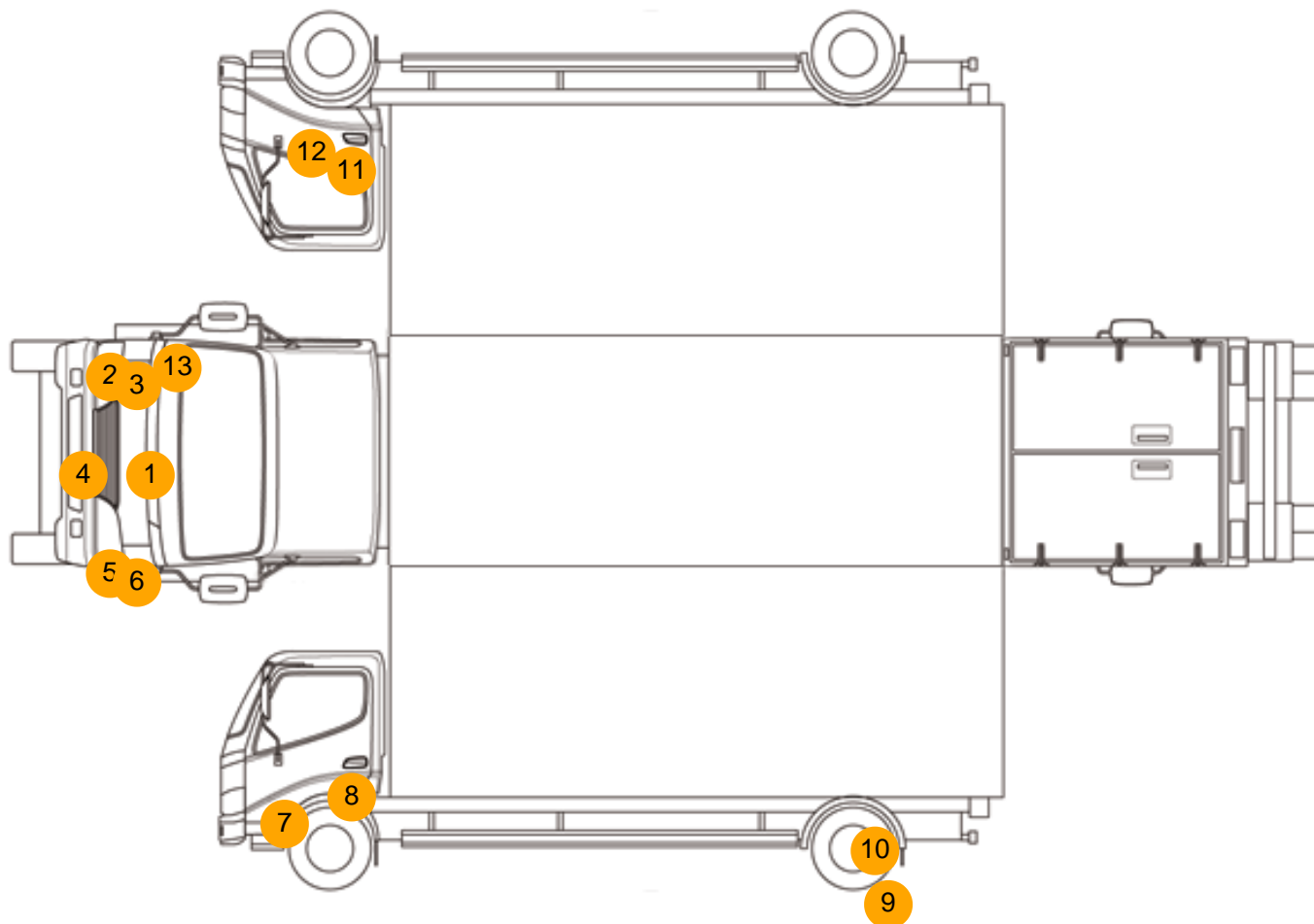
Photos







Condition Check



Damage Photos



1: Bonnet
Chipped
Multiple Chips



2: Bumper Front
Rusted
Over 5mm



3: Panel Front
Cracked
Replace



4: Bumper Front Moulding
Broken
Replace



5: Panel Front
Cracked
Replace



6: Panel Front
Dented
With Paint Damage



7: Door nsf
Dented
Over 30mm



8: Door nsf
Chipped
Multiple Chips



9: Other
N/A
N/A



10: Wheel nsr
Missing
Replace



11: Door osf
Dented
With Paint Damage



12: Door osf
Chipped
Multiple Chips



13: Panel Front
Dented
With Paint Damage

Interior

Carpet Condition	OK	Upholstery Condition	OK
Seat Condition	OK	Odour	-
Engine Runs	OK	No Excessive Smoking	OK
EML light illuminated	OK	DPF light illuminated	OK
ABS light illuminated	OK		