

# VEHICLE INSPECTION REPORT

**DG67OTM**

## Man TGM 18.250

### Inspection

Serious Damage? No

### Vehicle

VAT Plus VAT

V5 To Follow

### Details

Reg. date 24/10/2017

Year 2017

Mileage 195,991 Km Warranted

Fuel Type Diesel

Colour BLUE

VIN WMAN08ZZ8HY365578

Body Style Dropside

MOT Due 30/09/2026

Cab Type DAY CAB

Gearbox AUTOMATIC

Axle Combi 4x2

HMf 1420K REMOTE CRANE (YEAR 2017), SURROUND CAMERA SYSTEM, SERVICE SCHEDULE LIST AVAILABLE

### Tyres

NSF NSI1

OSF OSI1

Spare NSO1

OSO1

NSI2

OSI2

NSO2

OSO2

NSI3

OSI3

NSO3

OSO3

NSI4

OSI4

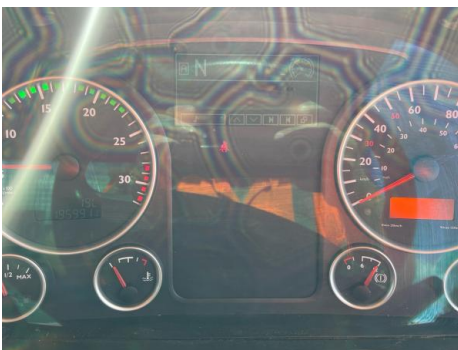
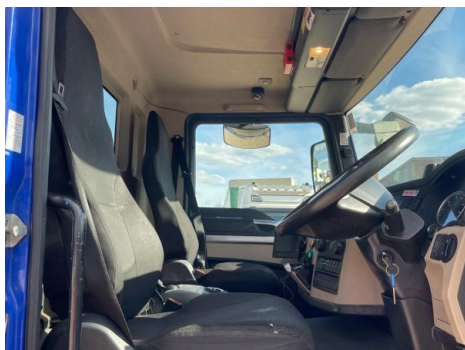
NSO4

OSO4

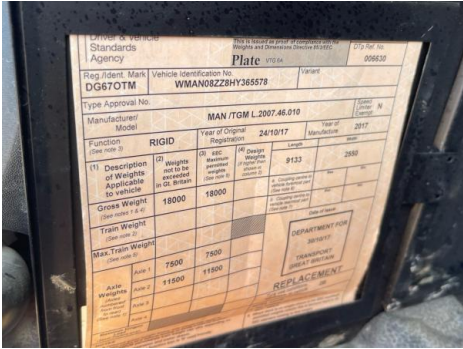
## Features

- Park assist camera

## Photos

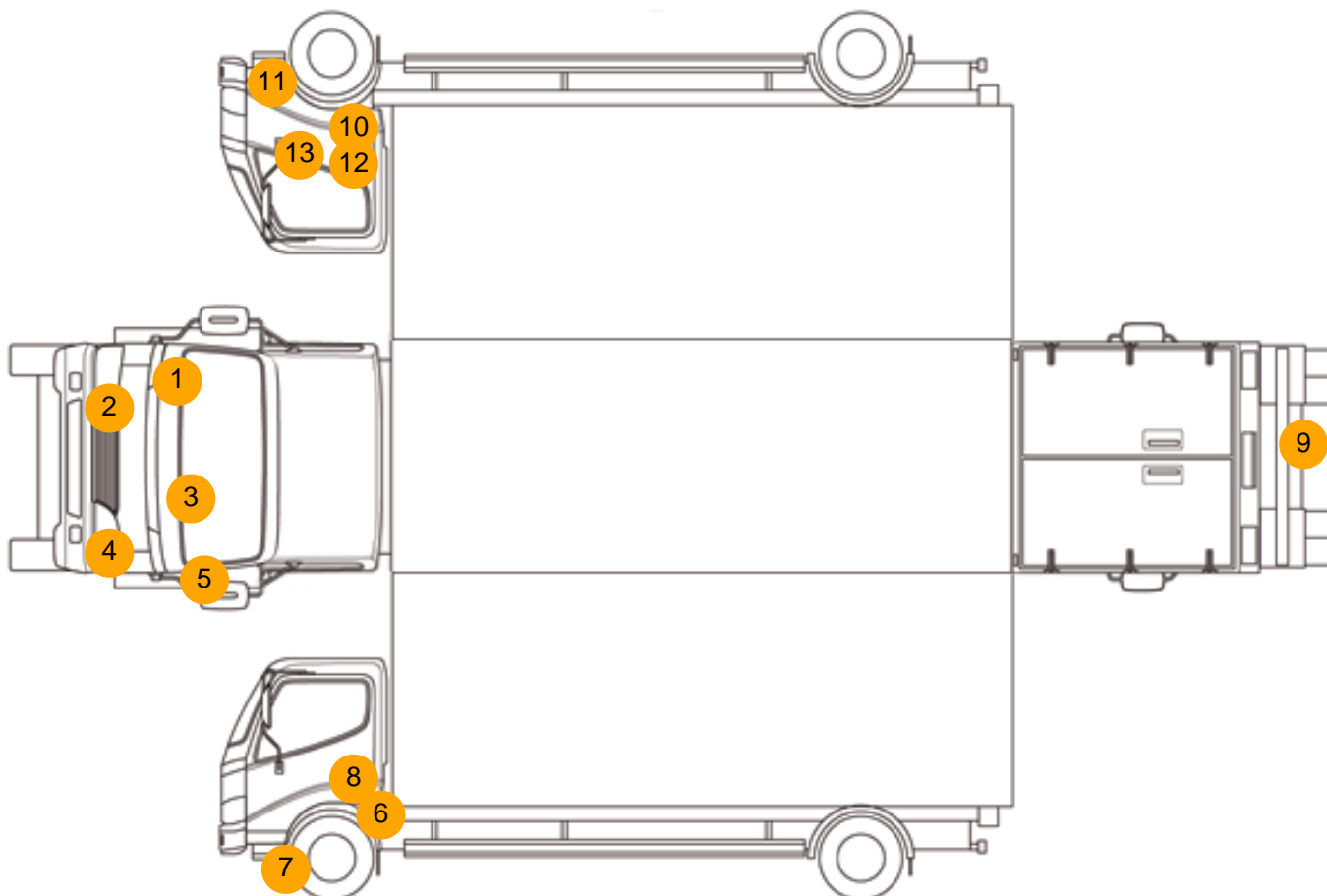








## Condition Check



## Damage Photos



1: Wing osf  
Chipped  
Multiple Chips



2: Fog Lamp Surround os  
Scuffed (Unpainted)  
UpTo 100mm



3: Bonnet  
Chipped  
Multiple Chips



4: Fog Lamp Surround ns  
Scuffed (Unpainted)  
UpTo 100mm



5: Wing nsf  
Scratched  
UpTo 25mm Thru Paint



6: Other  
N/A  
N/A



7: Other  
N/A  
N/A



8: Door nsf  
Dented  
Between 10mm + 30mm





9: Bumper Rear  
Rusted  
Over 5mm



10: Other  
N/A  
N/A



11: Other  
N/A  
N/A



12: Door osf  
Chipped  
Edge Chip



13: Door osf  
Scratched  
UpTo 25mm Thru Paint



14: Seat Base Cover osf  
Holed  
Over 3mm



15: Handle Inner osf  
Damaged  
Replace



16: Door Pad osf  
Missing  
Replace

## Interior

Carpet Condition		Average	Upholstery Condition		Average
Seat Condition		Average	Odour		-
Engine Runs	OK		Gearbox 1st and Reverse Test	OK	
Brakes	OK		Clutch Slip Test from Static	OK	
Parking Brake	OK		Gearbox Static Gear Selection (engine running)	OK	
			No Excessive Smoking	OK	
EML light illuminated	OK		Oil warning light illuminated	OK	
Airbag light illuminated	OK		DPF light illuminated	OK	
ABS light illuminated	OK		Service indicator light illuminated	OK	