

VEHICLE INSPECTION REPORT

SJ66WYW

IVECO DAILY 50-180

Inspection

Serious Damage? No

Vehicle

VAT Plus VAT

V5 Present

Details

Reg. date 30/09/2016

Year 2016

Mileage 57,668 Miles
Warranted

Fuel Type Diesel

Colour WHITE

VIN ZCFC150D405111849

Body Style Tipper Double Cab

MOT Due 28/02/2026

CAP Clean £6,750.00

CAP Average £5,625.00

CAP Below £4,175.00

Gearbox AUTOMATIC

WB 3450, TOW BAR

Tyres

NSF

NSR

OSF

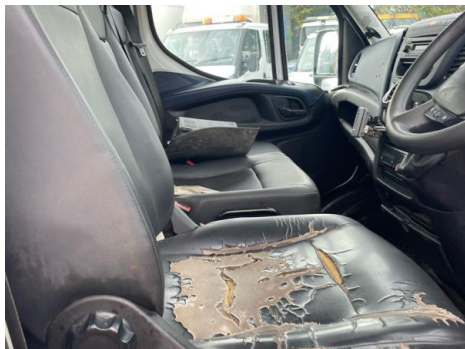
OSR

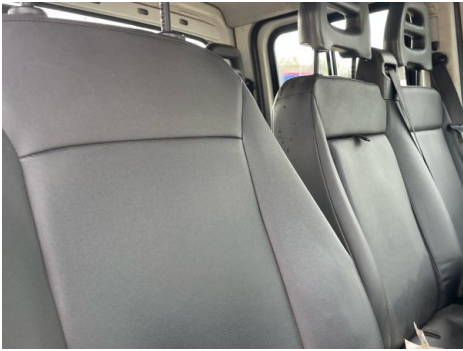
Spare

Features

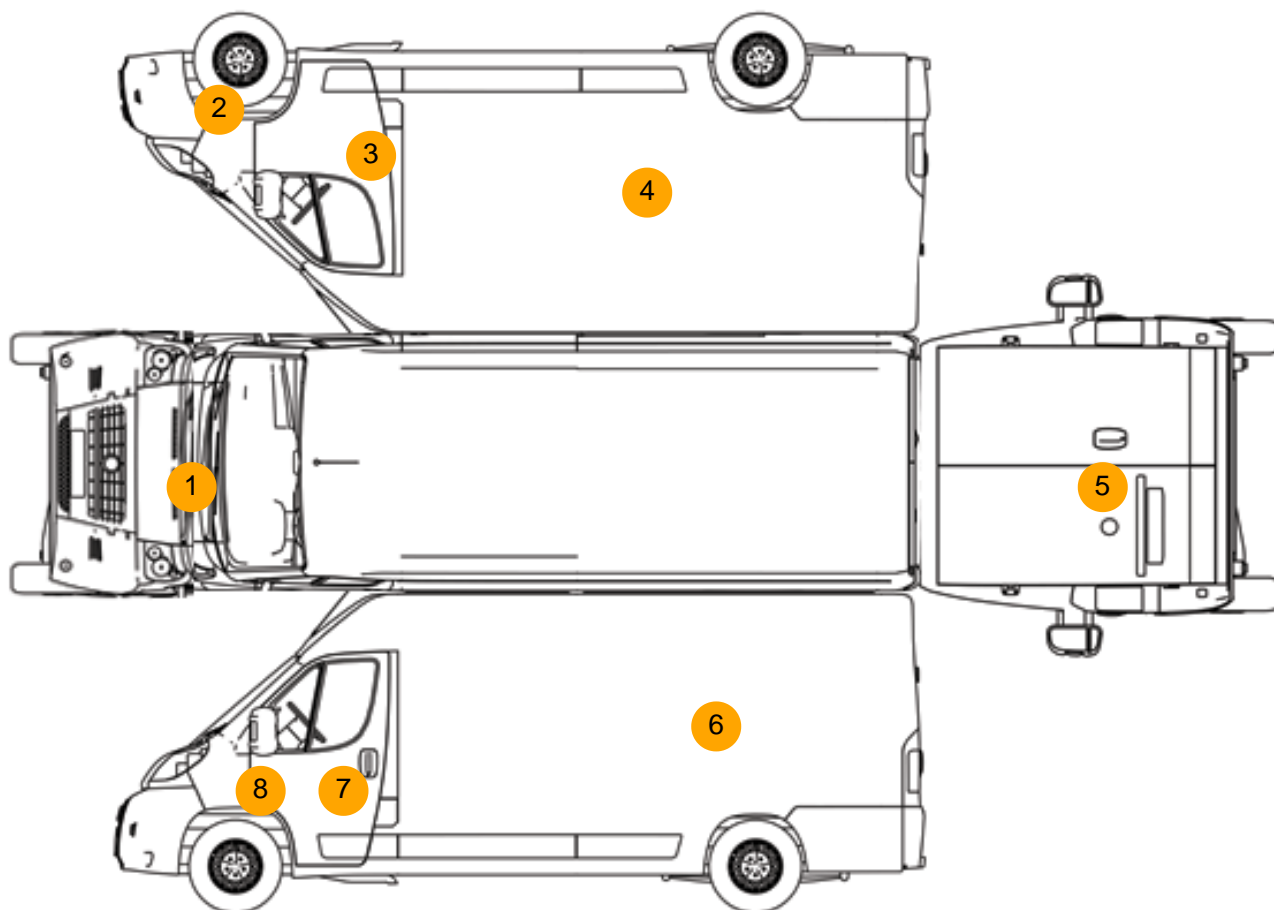
- Park assist camera
- Radio/CD
- Front electric windows

Photos





Condition Check



Damage Photos



1: Bonnet
Dented
With Paint Damage



2: Wing nsf
Dented
With Paint Damage



3: Door osf
Dented
With Paint Damage



4: Qtr Panel osr
Dented
With Paint Damage



5: Tailgate
Dented
With Paint Damage



6: Qtr Panel nsr
Dented
With Paint Damage



7: Door nsf
Dented
With Paint Damage



8: Wing nsf
Dented
With Paint Damage



9: Carpets Front
Holed
Over 3mm

10: Seat Base Cover osf
Torn
Over 3mm

Interior

Carpet Condition		Upholstery Condition	
Seat Condition		Odour	
Poor		Average	
Poor		No	
Engine Runs	OK	Gearbox 1st and Reverse Test	OK
Brakes	OK	Clutch Slip Test from Static	OK
Turbo Boosting	OK	Gearbox Static Gear Selection (engine running)	OK
Parking Brake	OK	No Excessive Smoking	OK
EML light illuminated	OK	Oil warning light illuminated	OK
Airbag light illuminated	OK	DPF light illuminated	OK
ABS light illuminated	OK	Service indicator light illuminated	OK
Windows	OK	Radio	OK
		Steering	OK