

VEHICLE INSPECTION REPORT

PO70YLJ

Mercedes-Benz Antos

Inspection

Serious Damage? No

Vehicle

VAT Plus VAT

V5 To Follow

Details

Reg. date	18/11/2020	VIN	WDB96302020349595	Axle Combi	6x2
Year	2020	Body Style	Curtainside	Rear Suspension	Steel
Mileage	412,823 Km Warranted	MOT Due	31/08/2026	Rear Doors	Barn
Fuel Type	Diesel	Cab Type	DAY CAB	Tail Lift	Column
Colour	BLUE	Gearbox	AUTOMATIC		

Tyres

NSF	NSI1	NSI2	NSI3	NSI4
OSF	OSI1	OSI2	OSI3	OSI4
Spare	NSO1	NSO2	NSO3	NSO4
	OSO1	OSO2	OSO3	OSO4

Features

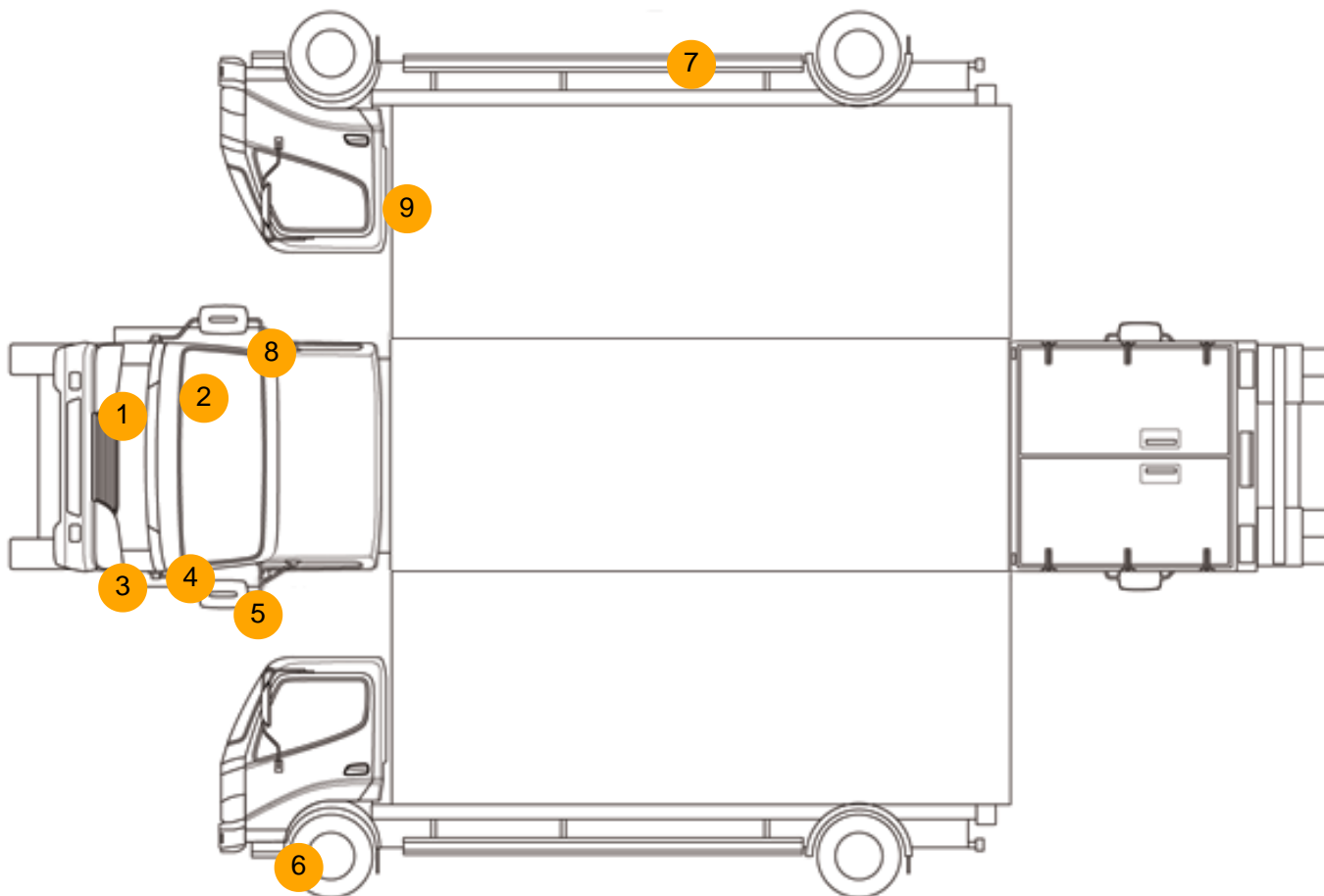
- Park assist camera
- Air conditioning

Photos





Condition Check



Damage Photos



1: Bumper Front
Chipped
Multiple Chips



2: Wing osf
Chipped
Multiple Chips



3: Bumper Front Moulding
Scuffed (Unpainted)
UpTo 100mm



4: Wing nsf
Scratched
UpTo 25mm Not Thru Paint



5: Door Mirror Assy nsf
Scuffed (Unpainted)
UpTo 100mm



6: Other
N/A
N/A



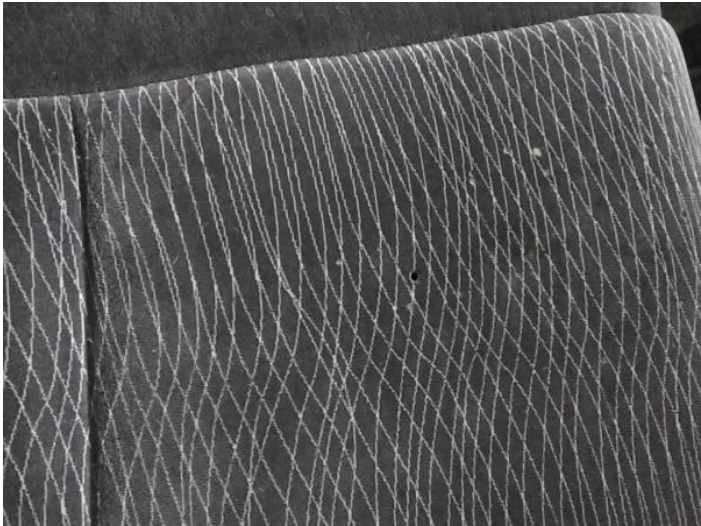
7: Other
N/A
N/A



8: Door Mirror Assy osf
Scuffed (Unpainted)
UpTo 100mm



9: Door osf
Chipped
Edge Chip



10: Seat Base Cover osf
Burn
Over 3mm

Interior

Carpet Condition		OK	Upholstery Condition		OK
Seat Condition		OK	Odour		-
Engine Runs		OK	Gearbox 1st and Reverse Test		OK
Brakes		OK	Clutch Slip Test from Static		OK
Parking Brake		OK	Gearbox Static Gear Selection (engine running)		OK
			No Excessive Smoking		OK
EML light illuminated		OK	Oil warning light illuminated		OK
Airbag light illuminated		OK	DPF light illuminated		OK
ABS light illuminated		OK	Service indicator light illuminated		OK