

VEHICLE INSPECTION REPORT

DA21HCP

Man TGM 18.250

Inspection

Serious Damage? No

Vehicle

VAT Plus VAT

V5 To Follow

Details

Reg. date	22/07/2021	VIN	WMA18DZZ3MY431805	Doors	2
Year	2021	Body Style	Curtainside	Axle Combi	4x2
Mileage	167,100 Km Warranted	Keys	1	Steering Combi	Standard Axle
Fuel Type	Diesel	Cab Type	DAY CAB	Rear Suspension	Air
Colour	RED	Gearbox	Automatic	Rear Doors	Barn

Rear View Camera

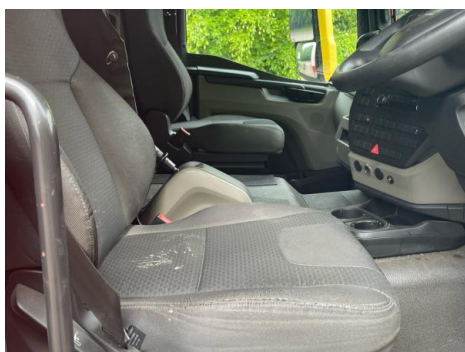
Tyres

NSF	NSI1	NSI2	NSI3	NSI4
OSF	OSI1	OSI2	OSI3	OSI4
Spare	NSO1	NSO2	NSO3	NSO4
	OSO1	OSO2	OSO3	OSO4

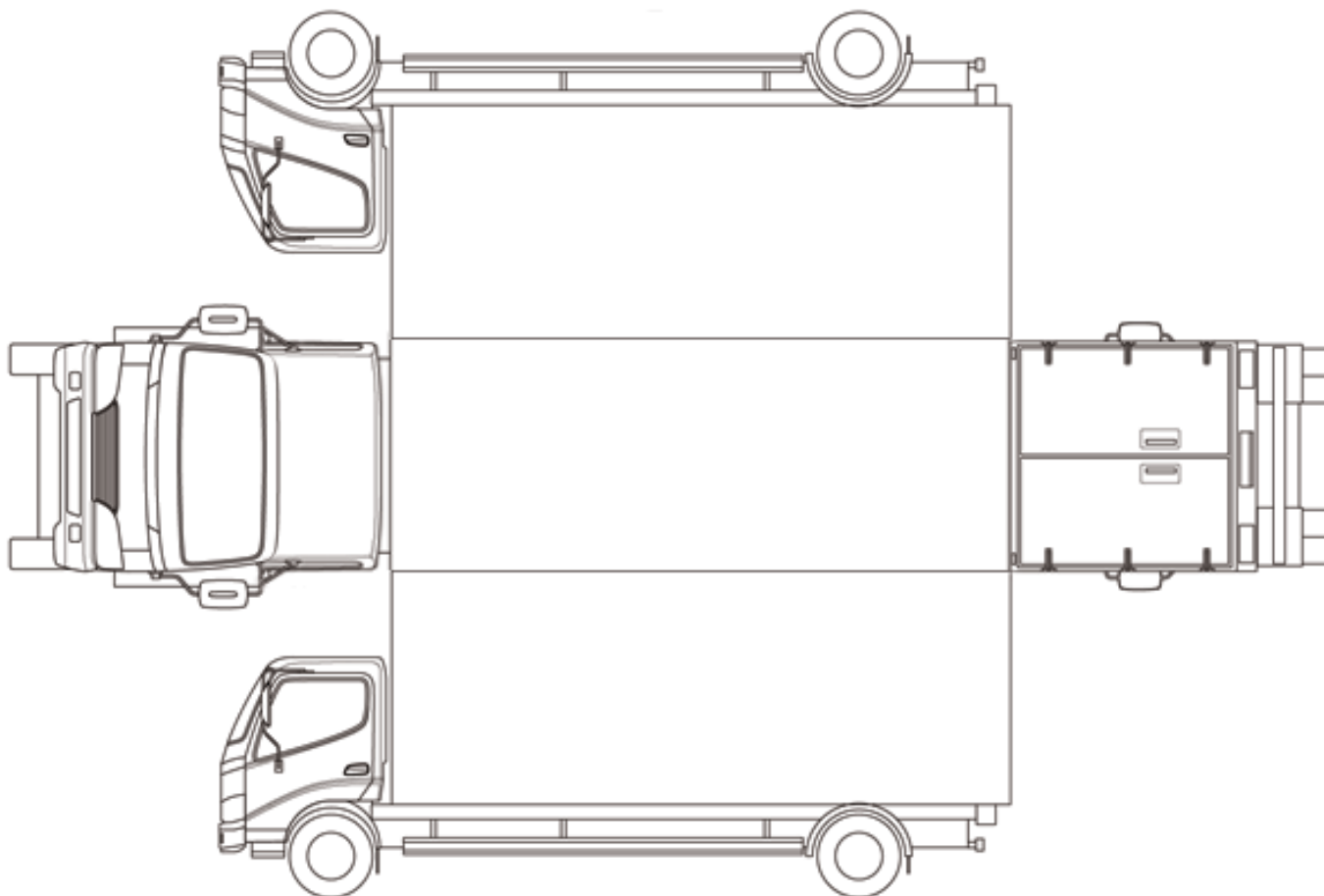
Features

- Bluetooth connection
- Cruise control
- Air conditioning

Photos



Condition Check



Damage Photos



1: Door Moulding of
Scuffed (Unpainted)
Up To 100mm



2: Wings of
Chipped
1 To 5



3: Wing osf
Chipped
1 To 5



4: Door Mirror Assy osf
Broken
Replace



5: Tailgate
Dented
Over 30mm



6: Qtr Panel nsr
Dented
With Paint Damage

Interior

Carpet Condition		Average		Upholstery Condition		Average	
Seat Condition		Average		Odour		-	
EML light illuminated		OK		Oil warning light illuminated		OK	
Airbag light illuminated		OK		DPF light illuminated		OK	
ABS light illuminated		OK		Service indicator light illuminated		OK	