

VEHICLE INSPECTION REPORT

FX20UJC

Renault Trucks T 480

Inspection

Serious Damage? No

Vehicle

VAT Plus VAT

V5 Buyer To Apply

Details

Reg. date 27/05/2020

VIN VF611C363LD001927

Axle Combi 6x2

Year 2020

Body Style Tractor Unit

Steering Combi Mid-Lift

Mileage 528,796 Km Not Warranted

MOT Due 31/05/2025

Rear Suspension Air

Fuel Type Diesel

Cab Type SLEEPER CAB

Colour WHITE

Gearbox AUTOMATIC

WARNING LIGHT ON DASH SLIDING 5TH WHEEL, MICROWAVE

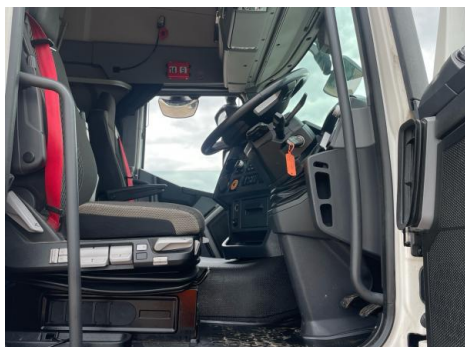
Tyres

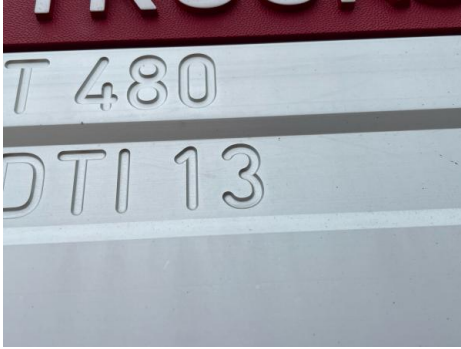
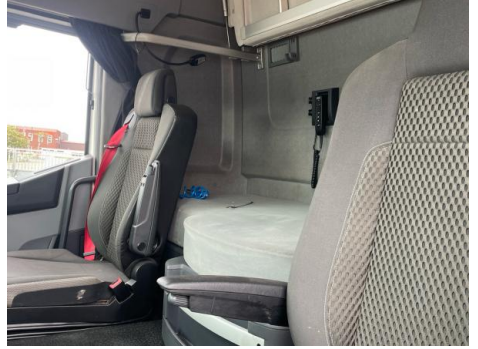
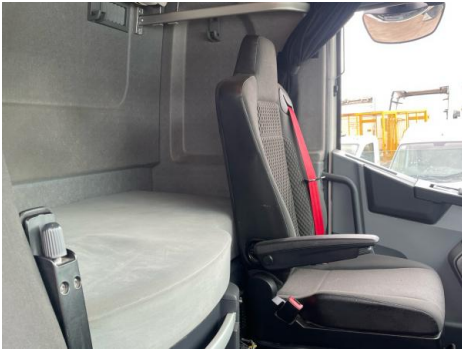
NSF	NSI1	NSI2	NSI3	NSI4
OSF	OSI1	OSI2	OSI3	OSI4
Spare	NSO1	NSO2	NSO3	NSO4
	OSO1	OSO2	OSO3	OSO4

Features

- Bluetooth connection
- Electric sunroof
- Central locking
- Cruise control
- Air conditioning
- Cloth seat trim
- Auxiliary input socket
- Front electric windows
- Radio/CD Multichanger
- Drivers airbag

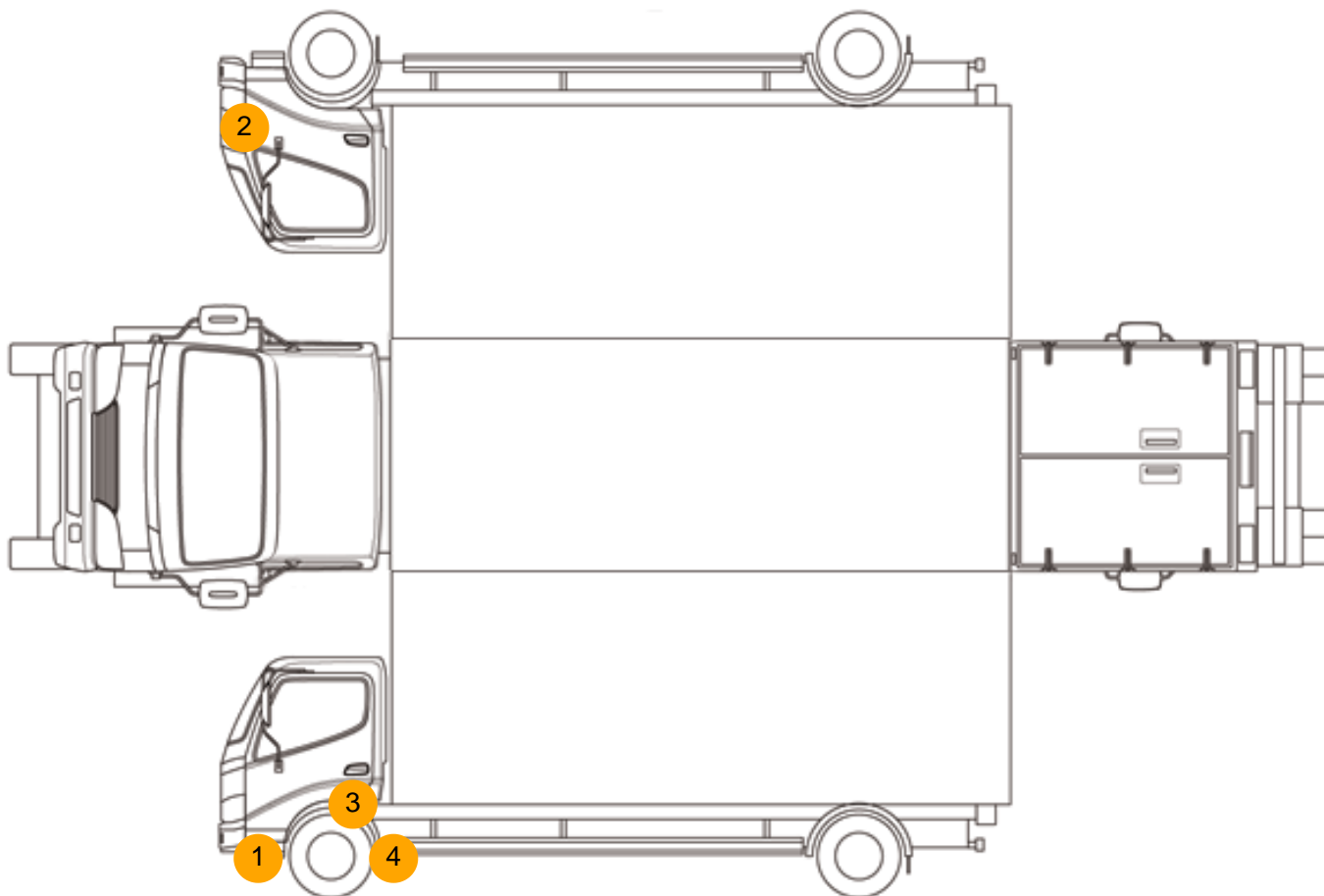
Photos







Condition Check



Damage Photos



1: Bumper Front
Scratched
Over 25mm Not Thru Paint



2: Bumper Front
Scratched
Over 25mm Not Thru Paint



3: Door Lock osf
Missing
Replace



4: Moulding osf Wing
Broken
Replace

Interior

Carpet Condition	Average	Upholstery Condition	OK
Seat Condition	OK	Odour	-

Mechanical Inspection

Important Notice: Customer must satisfy themselves that the health check is as stated by 5pm day after sale and prior to leaving centre. If vehicle has been delivered we must be notified within two hours of arrival at your dealership.

EML light illuminated	OK	Oil warning light illuminated	OK
Airbag light illuminated	OK	DPF light illuminated	OK
ABS light illuminated	OK	Service indicator light illuminated	Fault