

# VEHICLE INSPECTION REPORT

**PN63DME**

## Daf LF 45.160

### Inspection

Conditions	Outdoors - Good light
Serious Damage?	No

### Vehicle

VAT	Plus VAT
V5	To Follow

### Details

Reg. date	10/09/2013	Body Style	Box Van	Axle Combi	4x2
Year	2013	Keys	1	Rear Suspension	Steel
Mileage	457,593 Km Warranted	Cab Type	DAY CAB	Rear Doors	Roller
Fuel Type	Diesel	Gearbox	Manual	Tail Lift	Tuckaway
Colour	ORANGE	Gears	5		
VIN	XLRAE45FF0L429188	Doors	2		

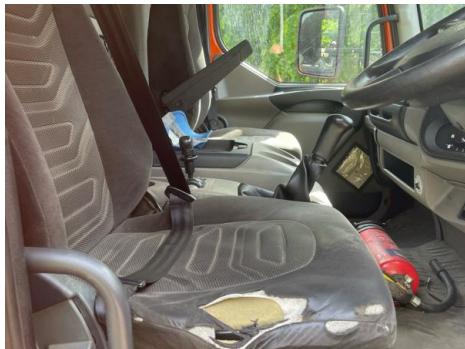
### Tyres

NSF	NSI1	NSI2	NSI3	NSI4
OSF	OSI1	OSI2	OSI3	OSI4
Spare	NSO1	NSO2	NSO3	NSO4
	OSO1	OSO2	OSO3	OSO4

## Features

- Cruise control
- Front electric windows
- Drivers airbag
- Central locking
- Cloth seat trim

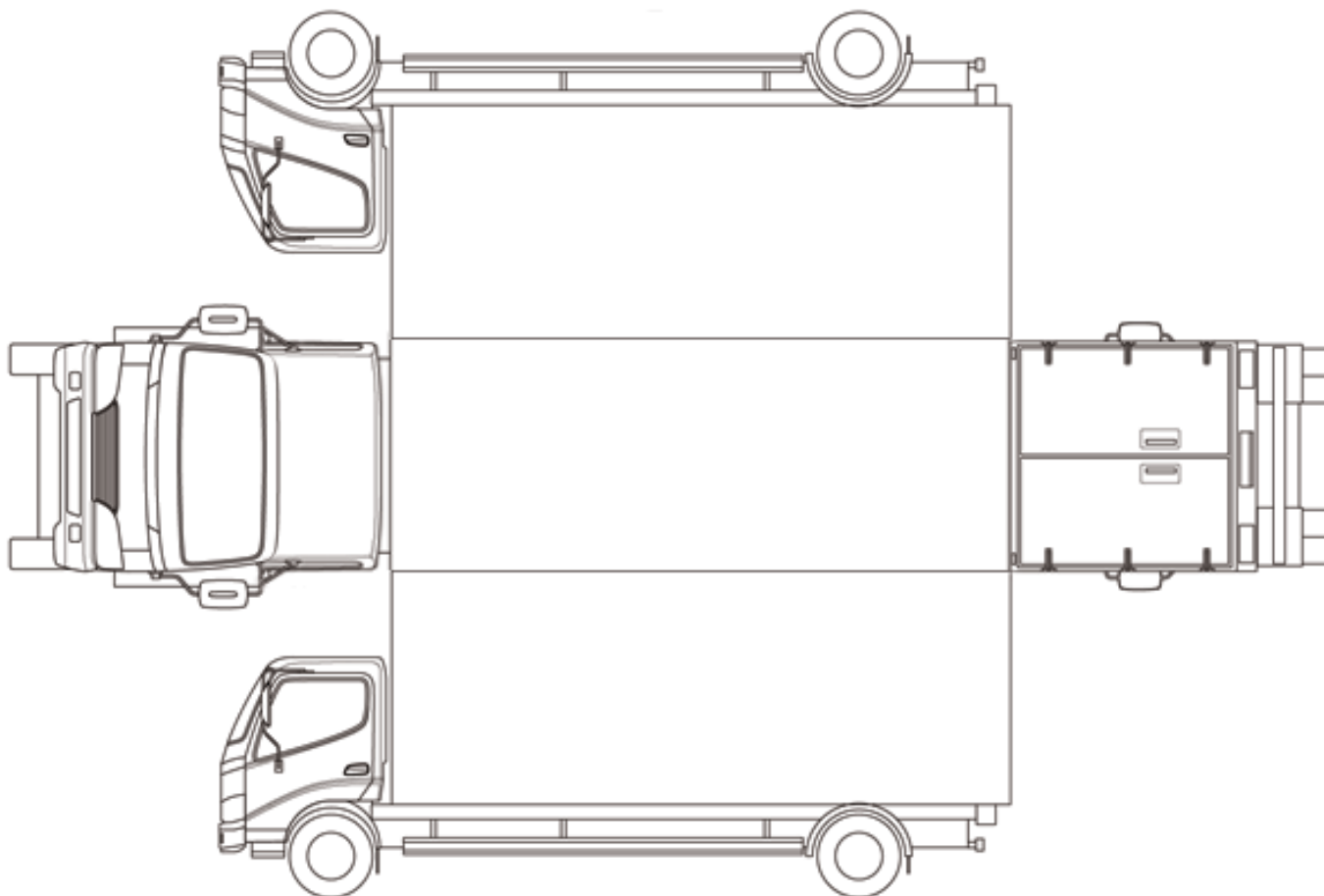
## Photos



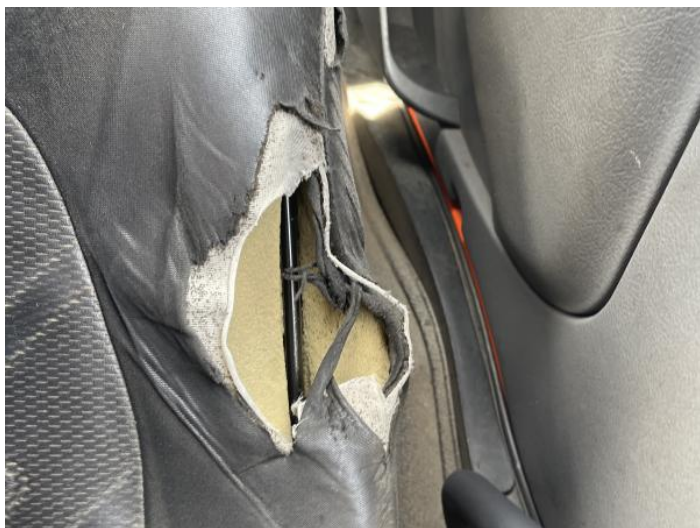




## Condition Check



## Damage Photos



1: Seat Base Cover osf  
Torn  
Over 3mm



2: Bonnet  
Chipped  
Multiple Chips



3: Wing osf  
Cracked  
Replace



4: Door osf  
Dented  
Over 30mm



5: Qtr Panel osr  
Hole  
Over 10mm



6: Tailgate  
Rusted  
Over 5mm



7: Qtr Panel nsr  
Dented  
Over 30mm



8: B Post ns  
Cracked  
Replace



9: Door Moulding nsf  
Scuffed (Unpainted)  
Over 100mm

Interior

Carpet Condition		Upholstery Condition	
Seat Condition		Odour	
Average		Average	
Average		-	
EML light illuminated	OK	Oil warning light illuminated	OK
Airbag light illuminated	OK	DPF light illuminated	Fault
ABS light illuminated	OK	Service indicator light illuminated	OK